

CHRISTIE MICROTILES LED

Cabinet-free. Ultra-lightweight.
Any shape you want.

Architectural design

Broadcast sets

Corporate

Live events

Museums

Retail

Stadiums

Universities

CHRISTIE[®]
MICROTILES[®]
LED



Limitless design freedom – Any shape, any size

Unleash your creativity and design outside the box with Christie MicroTiles LED. The proprietary cabinet-free Click-n-Go™ LED tiles can be arranged seamlessly in near-limitless ways while the innovative ADA-compliant QuickMount™ system lets you build your display in virtually any shape or size. Corners and curves, giant video walls, ribbons, and pillars – it's all possible with MicroTiles LED.

Superior visual quality – Automatically optimized

Christie MicroTiles LED features advanced LED display technology and powerful processing and control capabilities to produce an extraordinary, blur-free viewing experience. Bright, high-contrast visuals and cinema-quality color produces brilliant, true-to-life detail. Patented real-time IR Neighbor Detection™ and AutoMatch™ brightness and color matching automatically ensures image uniformity across the entire display for the duration of its operational life.



Custom design

90° inside and outside corners

Concave and convex curves

12-bit at 4K@120Hz

Cinema-quality color

>97% uniformity





INNOVATION CONTINUED

Christie® MicroTiles® LED continues the legacy of innovation set by the original MicroTiles platform and takes it a monumental leap forward.

With a mission to develop the best LED video wall display technology available, Christie engineers applied everything that made MicroTiles a success and combined it with the latest narrow pixel pitch LED technology and advanced mechanical design. The result is an intelligent system architecture that excels beyond any other LED display on the market.

Limitless design freedom

Superior visual quality

Intelligent design

Intelligent design – Smarter at every step

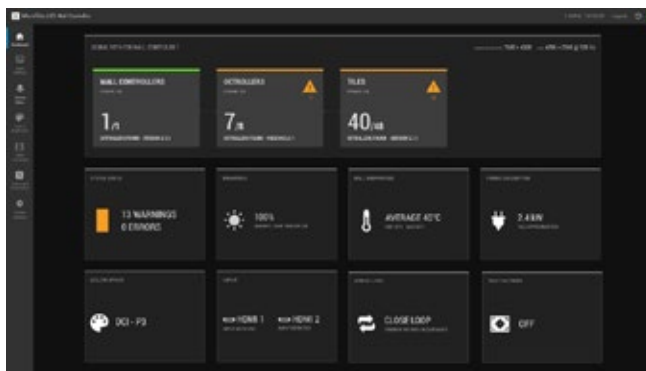
We took an uncompromising approach to develop an intelligently-designed video wall solution that eliminates the major pain points of traditional LED technology. From installation to maintenance and servicing to operation, MicroTiles LED works smarter so you don't have to.

Smart installation

The proprietary QuickMount system uses custom mounting templates, laser-cut steel mounting sheets and machined wall anchors to eliminate any alignment challenges. Once the sheet is mounted, the small size and light weight of the cabinet-free tiles reduces installation complexity while saving space and increasing flexibility. With Click-n-Go magnetic LED tiles, populating the display is incredibly fast. The QuickMount system also enables a phased installation that allows the mounting apparatus to be delivered and installed while the LED tiles are manufactured, saving time and cost.

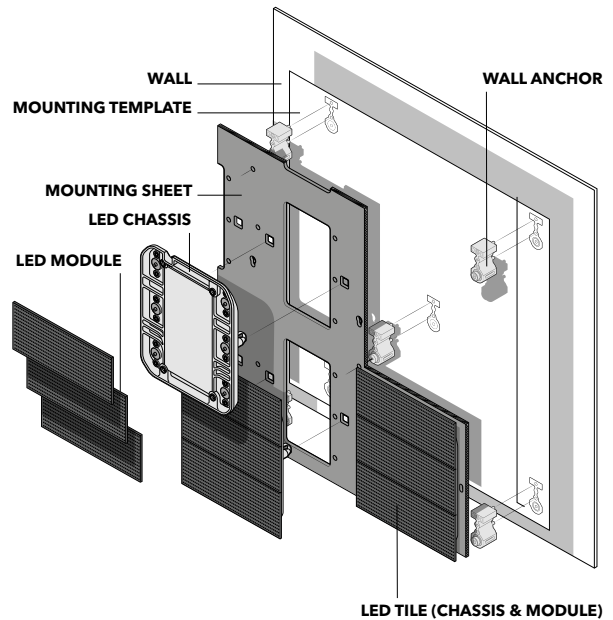
Smart operation

Take complete control of your display. The MicroTiles LED WebUI is an intuitive, easy-to-use, web-based control interface that can be accessed from any connected device. Designed with the user in mind, WebUI gives you total command of display setup, control and management.



Smart service and maintenance

Providing 100,000 hours of operational life, the maintenance and servicing of a MicroTiles LED display is minimal. Patented IR Neighbor Detection and AutoMatch brightness and color calibration achieves near-perfect uniformity while the front-serviceable, hot-swappable tiles give technicians complete access. For added convenience, remote power and control components can be installed in convenient locations away from the video wall removing heat, noise and complexity.



POWERFUL EVOLUTION

Christie MicroTiles - A part of our DNA

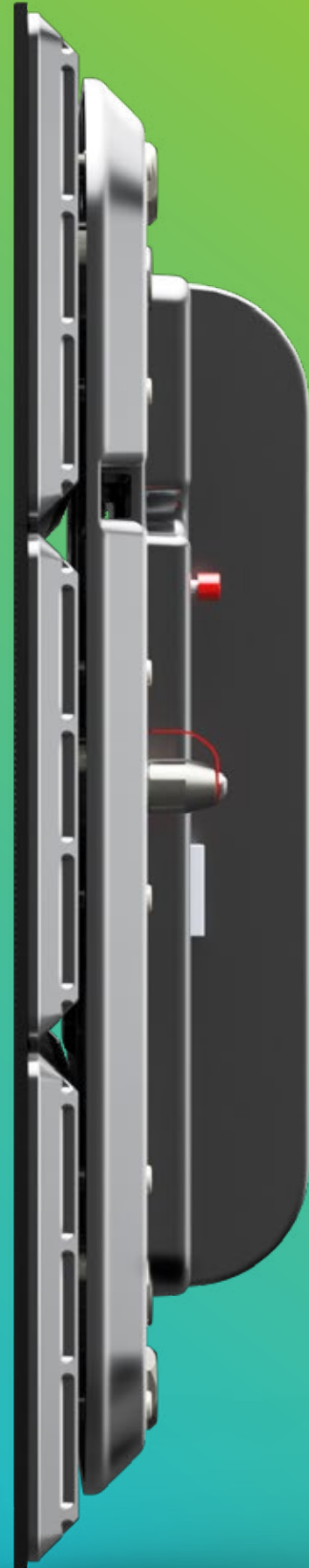
First introduced ten years ago, the original Christie MicroTiles has become an important part of our DNA. It represents everything we value: out-of-the-box thinking, boundary-pushing innovation, engineering expertise, amazing visual experiences, and a strong commitment to quality.

It is upon this foundation that we introduce the next evolution of this transformative display technology.

Complete, integrated solutions

Christie is uniquely positioned to offer complete, integrated solutions comprising the entire audiovisual workflow. We carry a wide range of industry-leading display technologies, powerful processing options and content management and networking platforms all designed to work seamlessly together.

*The next chapter of
the MicroTiles story
is truly extraordinary*



CHRISTIE®

christiedigital.com



For the most current specification information, please visit christiedigital.com

Copyright 2019 Christie Digital Systems USA, Inc. All rights reserved. All brand names and product names are trademarks, registered trademarks or tradenames of their respective holders. Christie Digital Systems Canada Inc.'s management system is registered to ISO 9001 and ISO 14001. Performance specifications are typical. Due to constant research, specifications are subject to change without notice. Printed in Canada on recycled paper. 4757 Feb 19

