

AVI-SPL

No. 19

CONCEPT CATALOG

BOLD IDEAS TO TRANSFORM EMPLOYEE AND CUSTOMER EXPERIENCES



AVI-SPL CONCEPT CATALOG



CORPORATE HEADQUARTERS

6301 Benjamin Road
Suite 101
Tampa, FL 33634

Sales: 866.708.5034

Website: avispl.com

Follow AVI-SPL



PRODUCED ANNUALLY BY AVI-SPL

Eric Barie

Senior Vice President of Marketing

Nancy Lussier

Director of Marketing Campaigns & Content

Peggy Loiseau

Senior Graphic Designer

Mathew DeFreitas

Product Marketing Specialist

Please direct all media inquiries to:

Eric Barie

Senior Vice President of Marketing

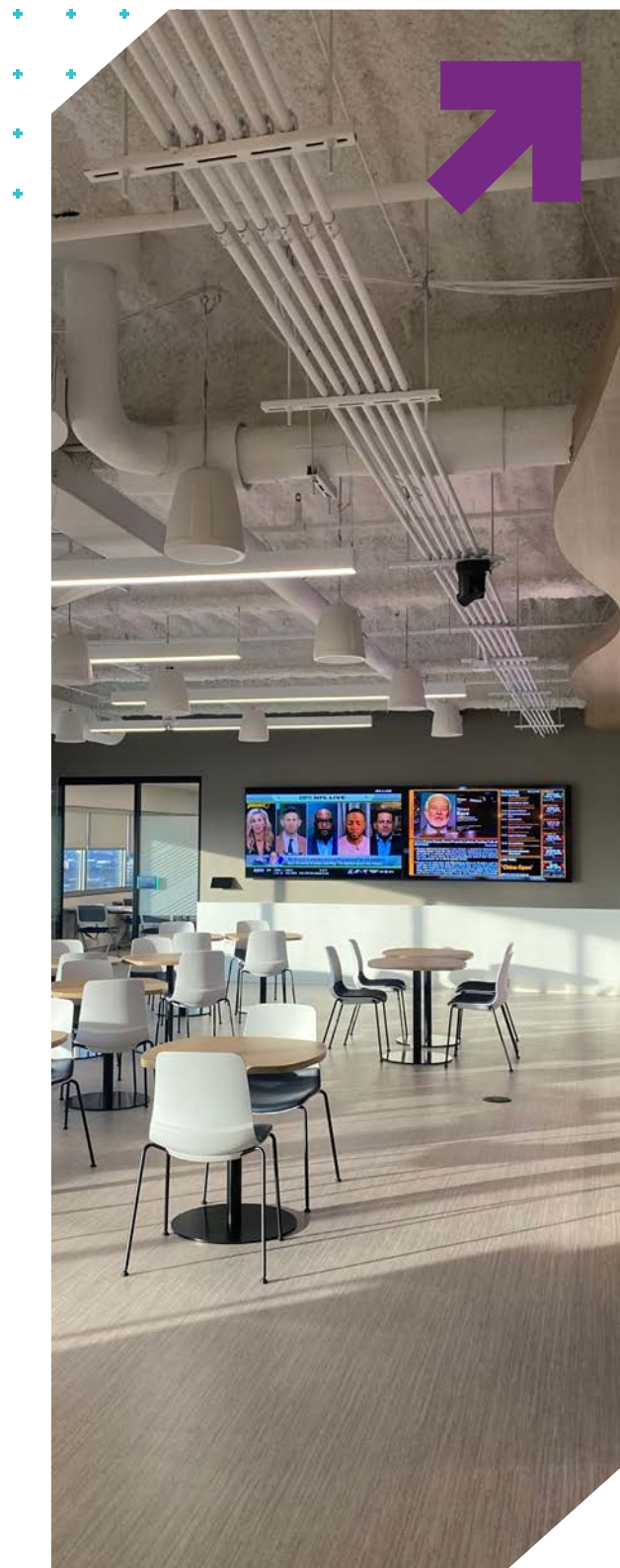
eric.barie@avispl.com

Copyright © 2025-2026 by AVI-SPL, Inc. All rights reserved.
No part of this publication may be duplicated without the
permission of AVI-SPL. The views expressed in the Concept
Catalog are those of the author(s) and do not necessarily
reflect the official policy, position or opinions of AVI-SPL.



CONTENTS

- 04** Essential technology strategies for a future-ready workplace
- 10** Activating the spaces between meetings with experience technology
- 16** How AI will transform collaboration, communication, and engagement
- 22** National Bank of Canada Case Study
- 28** Seamless Global Collaboration Begins with Effective Deployment
- 32** Designing a Greener Future: Sustainable Technology for the Modern Workplace
- 40** Carrollton Bank Case Study
- 43** Cloud Calling and Contact Centers
- 44** Stay Future-Ready by Protecting Enterprise Control Systems
- 48** Our Partners



ESSENTIAL TECHNOLOGY STRATEGIES FOR A FUTURE-READY WORKPLACE

Today's workplace is once again office-centric, whether teams have full-time or hybrid office schedules. Expectations are higher than ever.

From end users to executives, people want their workplace experiences to be more intuitive, engaging, aligned with their priorities, and work flawlessly anywhere.

Meeting those demands takes more than reliable tech. Today, you need tailored solutions that adapt to how your teams work, meet changing needs, and support long-term goals without adding complexity.

In this edition of the Concept Catalog, we highlight how personalized, future-ready solutions and AVI-SPL services help you build and maintain a future-ready workplace.



WHAT'S A FUTURE-READY WORKPLACE?

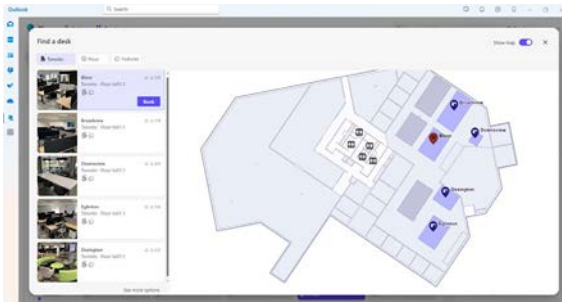
A future-ready workplace uses advanced AV and UC technology and expert support to engage and empower people, streamline collaboration, and adapt as needs evolve. The result? Confidence in your infrastructure and experience today, and the ability to focus on tomorrow.

HERE ARE FOUR WAYS TO CRAFT THE FOUNDATION OF YOUR FUTURE-READY WORKPLACE.

Design an office to engage and support

Instead of viewing the workplace as a destination, think of it as a series of touchpoints on a person's journey. The more we connect with people at each stage, the more we can boost their productivity, success, and well-being.

The workplace journey



Commute

Push notifications can confirm meetings, desk reservations, or room bookings. Workplace management and wayfinding tools like Microsoft Places can make finding the right space simple.



Lobby

Displays can welcome, guide, or tell people your organization's story.



Hallways and social spaces

Use video walls, lighting, and audio devices to inspire, whether it's brand messaging for employees or client success stories tailored to visitors.

Expanding your AV and UC infrastructure with [sustainable, intuitive technology](#) also supports well-being. It extends the life of your tech investments and shows employees and customers you care about your global impact.

Explore how workplace experience and sustainability fuel a future-ready workplace [on page 32](#).

[AVI-SPL's Experience Technology Group \(XTG\)](#) uses technology to create experiential workplace, executive briefing, and customer experience centers that attract talent, deepen relationships, and increase revenue.

[Dive deeper into the experiential workplace on page 10.](#)



Soon, we will use AI-powered tools beyond the meeting space.

Use AI to reshape team efficiency, corporate communications, and engagement

In addition to the experiences surrounding us, a future-ready workplace must employ solutions that make people as productive and efficient as possible. Meeting-centric AI has done that.

AI-powered AV and UC solutions from [Crestron](#), [HP Poly](#), [Logitech](#), [Neat](#), [Huddly](#), and more frame individuals in meeting spaces to ensure everyone is seen and heard.

Platforms like [Microsoft Teams](#), [Cisco Webex](#), [Zoom](#), and [Google](#) make it easier to attend and stay updated on meeting interactions with AI notetaking, assignment tags, detailed meeting summaries, voice commands, and more.

What's next? Soon, we will use AI-powered tools beyond the meeting space. This shift will streamline workflows and reshape how we measure efficiency, communicate with our teams, and visualize meeting engagement.

NEW WAYS TO EMBRACE AI



Agentic AI: Carry AI into every interaction. Agentic AI will help end users manage calendars, schedule meetings, write documents, and solve complex customer service problems.



Corporate video, reimagined: Executives will no longer have to be on-site to create broadcast-quality video. AI-powered production tools can create full-motion content with realistic avatars and virtual sets.



Personalized one-to-one virtual engagement: Google's Beam is redefining how we think of engagement. Using multiple hi-res HP Poly cameras, 3D imaging, spatial audio, and Google Meet, it creates lifelike, three-dimensional virtual conversations. No 3D glasses required.

Get the most out of the next phase of AI [on page 16](#).

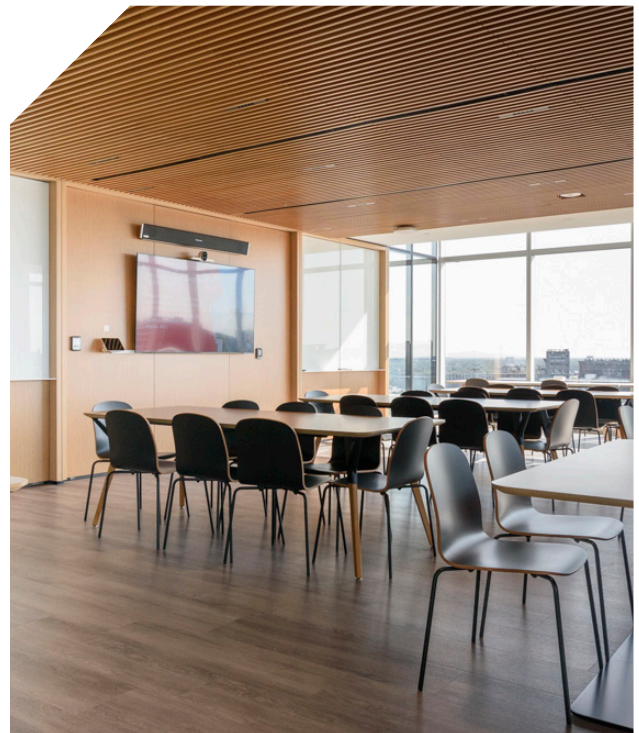
Embrace simple, scalable AV and UC solutions

Easy-to-use collaboration technology solutions that grow with your organization provide consistent user experiences and are quicker and simpler to deploy and manage.

A consistent collaboration experience also saves IT time launching new systems and training employees.

[AVI-SPL Canada](#) recently helped the National Bank of Canada standardize a set of AV and UC solutions throughout their new Montreal HQ.

Read how we redesigned and launched forty floors of systems [on page 22](#).





Scalability is not just a consideration for large or global organizations.

Take Carrollton Bank, based in the St. Louis area. The bank needed a cloud calling platform that could meet their current needs and adapt as they grow. AVI-SPL worked with Carrollton Bank to implement a Microsoft Teams Phone solution personalized to their business and scalable for the future.

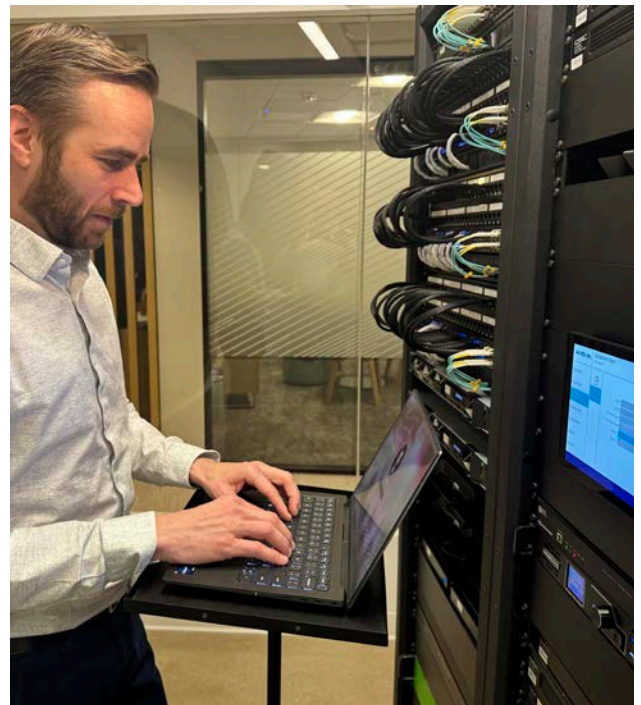
Read how AVI-SPL's professional services team helped Carrollton Bank find this solution [on page 40](#).

Proactively protect and manage your tech for peace of mind

You have an ideal set of AV and UC solutions that make integration easy and elevate the workplace experience. But managing these solutions can take IT's focus away from what's next.

Third-party remote and on-site support can help alleviate the workload.

In addition to AVI-SPL's personalized solutions and integration capabilities, we have remote and on-site management experts who monitor, maintain, and optimize your infrastructure. Our AV/IT support experts give you the confidence that everything will run smoothly, so you can stay focused on the future.





HERE'S HOW WE CAN HELP:

- ➔ **Enterprise Managed Services:** AV, UC, and digital signage technology coverage throughout your modern workplace, spaces, and the cloud.
- ➔ **24/7 support and maintenance:** localized tech support anytime, anywhere.
- ➔ **Onsite management:** dedicated technicians to manage your infrastructure daily.
- ➔ **Firmware and software protection:** Control system network testing to ensure devices stay functional and secure while providing a flawless user experience.

AVI-SPL programmers ensure your organization stays future-ready with enterprise programming protection. Explore the benefits [on page 44](#).

At AVI-SPL, we partner with you to design, deploy, and manage a future-ready workplace. Together, we use AV, UC, and experiential technologies tailored to meet your vision and team needs.

Let's explore how these tech concepts can transform your workplace and prepare you for what's next.



ACTIVATING THE SPACES BETWEEN MEETINGS WITH EXPERIENCE TECHNOLOGY

Future-ready offices engage people in every moment

What if the most powerful part of your workplace isn't the boardroom, but the hallway outside it?

Many are returning to the office out of necessity. But if people are coming back, shouldn't they have a workplace they look forward to? A place that motivates, inspires, and supports them?

Employees and customers bring goals, stress, creativity, and a range of questions.

As AV and IT professionals, we can elevate team productivity with AV and UC tools. We can also make a positive impact on team and customer well-being in our lobbies, cafes, and hallways - those transitional spaces.

In this article, we'll explore how your transition spaces and technology can engage and positively impact people for a more fulfilling workplace experience.



Engagement that inspires, not just connects

Workplace engagement is often viewed through the lens of collaboration tools. Screen sharing, gamification, and breakout tools can help keep meetings moving. But engagement tools can't shift a person's mindset. A person's outlook, energy, and focus come to work with them.

AVI-SPL XTG's Director of Markets and Strategy, Mark Coxon, puts it this way:

"We're often focused on our meeting spaces and workstations, and rightfully so. Those rooms are where major business decisions are made. But there's often no demarcation between being creative at 10:59 and going into an accounting review at 11. And we know that for humans, a physical transition can denote a mental transition, giving that space to breathe."



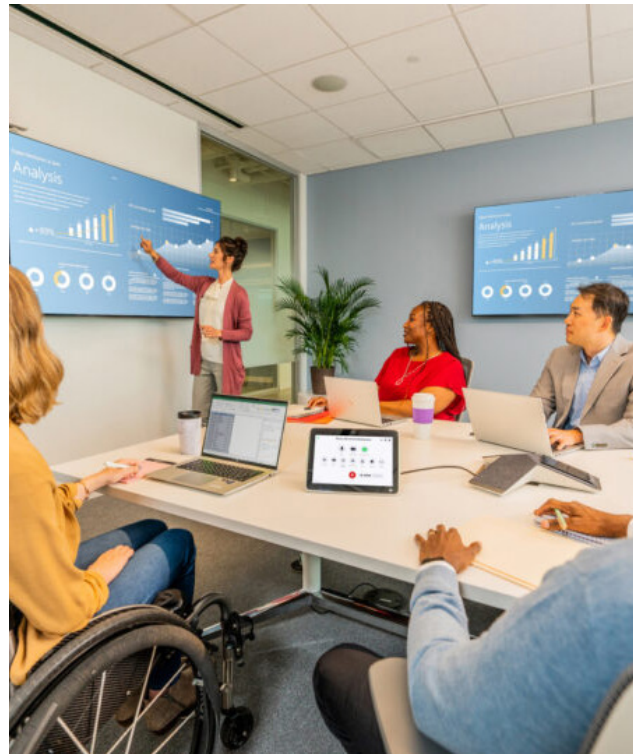
➤ Rather than thinking of the workplace as just a collaboration hub, we should view it as a **series of touchpoints** on a person's daily journey.

That transition space to breathe, when supported by immersive, well-placed technology, can focus and shape someone's mood before a meeting starts. And if we support people throughout the day in these small, intentional ways, the impact can ripple across the organization.

Rather than thinking of the workplace as just a collaboration hub, we should view it as a series of touchpoints on a person's daily journey.

Mapping the customer and employee journey

We have numerous touchpoints to tell a story that can positively impact customers and employees. Their journey begins the moment they decide to come to the office and ends when they leave for the day.



“

When somebody leaves their house to go to the office, they're not only going to do the task,” said Coxon. “They're also going there to have a social experience. They're going there for some element of discovery. There's an aspirational goal. There's a social goal. All of those human motivations are at play.”



On that journey, strategically placed video walls, lighting, soundscapes, and touch displays can help employees and customers feel more supported and engaged.

So, how do we use technology to impact people at the right time on that journey?

We craft personas.

Craft personas to design intentional transition space experiences

“By examining the personas of the people that come to the office, we can start to say, 'What do we want those people to do when they leave?’” said Coxon. “How can we leave them

on an elevated plane of what's possible with a piece of actionable insight? And then with these personas in mind, we can design our transition spaces with technology to tell meaningful stories.”

We must account for various customer and employee scenarios to build a foundation for these personas, including but not limited to:



New client

Align messaging with their goals through inspirational brand, mission, and vision content to create reassurance and awe.



Current customer

A customer further along their journey may not need an immersive experience. Instead, adaptive hallway lighting and wayfinding can offer personalization, calmness, and positivity.



Seasoned team member

Long-tenured employees may appreciate more personalized content in cafes and hallways that remind them of their purpose and past successes.



Overextended employee

Employees facing stress after intense meetings can benefit from wellness spaces with calming lighting and soundscapes to reset before their next task.



New hires

People may join your business for its mission, vision, and values. But your lobby may not be where they enter the office. Strategically placed video walls in employee entrances and digital displays lining the hallways to their workstations featuring brand messaging can serve as motivators. Additionally, soft lighting can help create a welcoming atmosphere.

The moments between meetings or tasks can be energizing, calming, or motivating, depending on what people need.

Our Experience Technology Group (XTG) blends technology, space, and content to transform environments into spaces that surprise and delight. Moreover, we create spaces that instill confidence so people can be curious, creative, and fully present in the moments that matter.

Let's craft immersive, future-ready work environments that people look forward to coming to every day.

[Reach out to AVI-SPL's Experience Technology Group to get started.](#)

Designing these environments requires hardware, strategy, empathy, and a profound understanding of how people navigate and interact in an office. That's where **AVI-SPL's Experience Technology Group (XTG)** comes in.

Watch our podcast with AVI-SPL XTG's Mark Coxon for a deeper dive into how experience technology can create a motivating and engaging workplace experience.

AVI-SPL **XTG**
Experience Technology Group

THE COLLABORATION SPACE

MATHEW DEFREITAS
Product Marketing Specialist at AVI-SPL

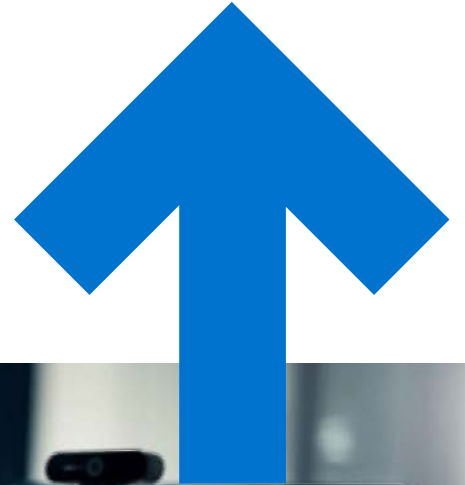
MARK COXON
Director of Strategy and Technical Services at XTG

Watch the Podcast →



HOW AI WILL TRANSFORM COLLABORATION, COMMUNICATION, AND ENGAGEMENT

A future-ready workplace runs on AI



AI helped everyone in hybrid meetings feel seen and heard. We then enhanced the hybrid meeting user experience with virtual assistants.

Now, AI is poised to transform the way we work... again. We'll experience personalized support for daily tasks, advanced corporate communication, and a new way to define meeting engagement.

Let's talk about it.

Your personal modern workplace agent

AI is growing beyond just meetings—it's becoming your personal workplace assistant.

Soon, these capabilities will accompany individuals throughout their day, across meetings, corporate communications, digital signage, workstation reservations, and more, with Agentic AI.

"The UCC-AI landscape is going to expand to support any individual work style and environment daily to streamline how we work," said Derrick Kelly, AVI-SPL vice president of solutions enablement. "AI will shift from reactive meeting summarization to a host that prompts and supports people throughout their day."



Where Agentic AI is most impactful

Video meeting analysis: Common meeting discussions involve action items and when to follow up. Agentic AI will assess the action items, assign tasks, and identify openings in team schedules to facilitate future meetings. Additionally, this technology can help send out meeting invites and book rooms.

"If you have your calendar synced up with an Agentic AI-enabled platform, and it is doing meeting transcriptions, it will analyze that," said Kelly. "The system will then determine that you said you need to meet with these people. You said you need to create a document. It has already started the document for you or found you a working copy of it amongst your documents."



The virtual agent can resolve customer challenges to improve customer satisfaction and allow support agents to focus on more complex issues.

Meeting scheduling and wayfinding: Rather than cycling through a room list to find the perfect meeting spot, users can share the type of meeting and number of people. The platform will provide a list of available spaces and times.

In addition, once a user books a meeting, an Agentic AI-enabled wayfinding platform will give users personalized directions to the space. Directions can appear on a personal device and a lobby or hallway display as individuals reach and travel through the office.

Space management and streamlined support:

We are already seeing the impact of AI on space management and the devices in those rooms. The personal AI agent can also help manage space power consumption and assess which devices are necessary for each meeting.

Smaller or hybrid meetings may only require a touch display on a mobile cart, whereas larger spaces with larger audiences may require a more traditional meeting experience.

This AI enhancement can also use its memory and reasoning skills to enhance customer support experiences for IT and end users. These new capabilities improve virtual agent interaction with contextual conversations and task-based actions.

The virtual agent can resolve customer challenges to improve customer satisfaction and allow support agents to focus on more complex issues.



Zoom has incorporated Agentic AI into its AI Companion, spanning Zoom Meetings, Phone, Team Chat, Docs, Contact Center, and Virtual Agent. The introduction of this new AI algorithm utilizes reasoning, memory, action, and task details to handle calendar management, writing assistance, and rapid clip creation. All of these are moldable to a user's or IT's needs.

Corporate communication – streamlining filming and post-production

Corporate communications videos may require actors or team members from out of state or out of the country to be on-site or in-studio. Or, a production crew may have to go on location.

Corporate production teams can now bring people and locations together on-screen while never leaving an edit bay.

With the help of AI, content creators can develop full-motion videos featuring realistic avatars of people and backgrounds, as well as royalty-free music beds.

All a video production team must provide is a script, voiceover audio, and/or presentations for appropriate placement within the video.

Google has launched Veo 2 and Veo 3, video-generation models that create realistic motion and up to 4K quality output. Veo 2 lets producers craft video ranging from animated content to material you would see in the cinema.

“A content creator can define avatars, give them a script, and then input that information into Veo 2 to create a video,” shared Kelly. “The creator tells the platform what backgrounds or PowerPoint slides to use. With all of that information, it produces a video. If the creator doesn’t like it, they can edit the footage.”

In addition to high-res video, Veo 2 enables production teams to specify camera angles, lighting, and movement.

The next iteration, Veo 3, builds on Veo 2 by emphasizing elevated realism, enhanced prompt control, natural sound effects, ambient noise, and dialogue. Production teams can also upload reference images to ensure digital characters and sets align with their vision.

AVI-SPL’s Production Services and Digital Content Services team is testing this new production approach to produce broadcast-quality customer events efficiently.



**AI IS GROWING BEYOND
JUST MEETINGS—IT'S
BECOMING YOUR PERSONAL
WORKPLACE ASSISTANT.**



Reimagining engagement in virtual conversations

A challenge in large and one-to-one hybrid or virtual meetings can be lost engagement over time. So, how can we ratchet up that engagement? Make it feel like the person you are speaking to is in the room with you.

Google's Beam is making this possible. The solution utilizes AI, multiple high-resolution cameras, 3D imaging, spatial audio, and Google Meet or Zoom so individuals can engage in one-on-one discussions.

These discussions are three-dimensional face-to-face conversations with someone in an office, a town, or thousands of miles away.

Additionally, the 3D experience can be enjoyed without glasses or goggles.

AVI-SPL team members have been able to test this solution, and the experience has been remarkable.

Individuals sit across a virtual table from one another as if they are in the same room. The 3D imaging draws your eyes directly to the other person across from you. And because it feels like the person is in the room, you rarely break eye contact.

If your enterprise is considering embracing a new form of workplace engagement, our collaboration technology experts would be happy to introduce you to Google Beam.

Contact AVI-SPL to explore how these AI innovations can elevate your workplace experience, from IT to employee engagement. Let's shape a smarter, more connected workplace, together.





CASE STUDY

NATIONAL BANK OF CANADA

AVI-SPL Canada enhances National Bank of Canada's Montreal HQ hybrid workplace with future-ready solutions



→ Organization

National Bank of Canada

→ Location

Montreal, QC, Canada

→ Market

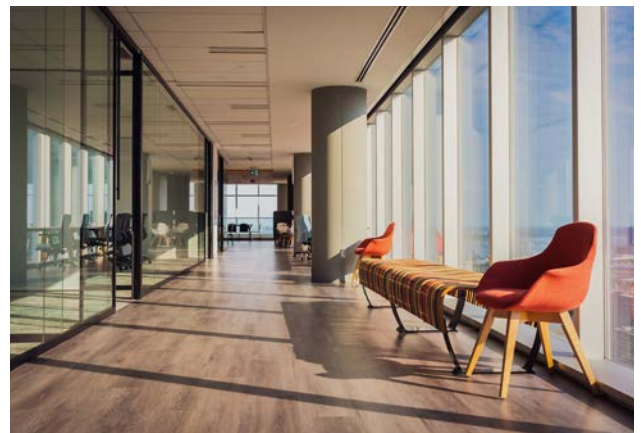
Financial Services

→ Solution

Biamp, Bose, Epson, HP | Poly, Legrand AV, Microsoft Teams, Peerless-AV, Q-SYS, Samsung, Sennheiser

Intuitive and standardized AV/UC tech powers new Montreal HQ vision

National Bank of Canada is Canada's sixth-largest bank and leading one in Quebec. The bank provides financial services to individuals, businesses, and clients domestically and internationally to positively impact people's lives. The financial institution has provided these services since 1859.



National Bank Place: a hub for employee, client, and community collaboration

In 2018, the bank set out to build National Bank Place - an immaculate headquarters in downtown Montreal. The vision? Create a space for employees, clients, and the local business community to collaborate and thrive.

Headquarters designs feature floor-to-ceiling windows and a vast lobby with massive video walls, digital displays, audio equipment, and museum-quality art. The building also features multi-purpose common areas, large conference rooms, huddle spaces, a wellness center, a cafeteria, auditoriums, and more.

“The new building was designed with a hybrid work model in mind,” said Manuel Vallée Léger, Experience Leader, Physical Workplace at National Bank.

This forward-thinking approach helped expand headquarters staff from 8,000 to 11,000

Shifting work trends spark tech upgrades and expert support needs

Evolving AV/UC tech and user needs meant National Bank’s collaboration infrastructure needed future-ready upgrades.



In 2022, the bank sought third-party assistance to optimize forty floors of meeting spaces, the lobby, auditoriums, the wellness space, and the cafeteria.

AVI-SPL Canada was the ideal partner for its:

- ➔ Audiovisual and unified communications design and deployment expertise
- ➔ AV solution that balanced tech innovation with ease of use and scalability
- ➔ Global reach (ability to serve Canadian, New York, and London offices)
- ➔ Strong corporate social responsibility commitments
- ➔ Bilingual support

“We felt well taken care of by your team,” said Maxime Migneault, AV Solutions Integrator at National Bank.

“

Our initial meetings were productive, and we efficiently established a plan and clearly defined the roles of each stakeholder. This was extremely useful because, soon after, we could smoothly integrate the deployment of the conference rooms with the general contractor and other stakeholders.”

Maxime Migneault, AV Solutions Integrator at National Bank

Consistent collaboration driven by standardized AV solutions

Employees familiarized themselves with Microsoft Teams while working remotely. The bank aimed to ensure a smooth transition to a new facility and provide consistent, user-friendly hybrid meeting experiences. So, they chose Microsoft Teams Rooms as their primary meeting space design.

AVI-SPL Canada proposed a custom AV solution tailored for Microsoft Teams Rooms, featuring HP Poly cameras, Samsung displays, and soundbars.

HP Poly cameras automatically adjust to presenters in real time for clear visibility. Simultaneously, soundbars and Samsung displays ensure in-office and remote teams can clearly communicate.

Microsoft Teams Rooms, powered by HP Poly cameras, Samsung displays, and Nureva soundbars, provide a consistent hybrid meeting experience

- flexible enough to evolve as new technologies emerge.

Additionally, the benefits of this custom solution extend beyond Montreal. Standardizing hybrid meetings enabled the bank to foster seamless collaboration across its offices across the country and abroad.

“We achieved a high adoption rate, which for us meant ‘Mission Accomplished,’” said Léger. “We succeeded in providing a technological environment in our meeting rooms that met our users’ expectations.”

Customizing AV tech for inviting, intuitive gathering spaces

The layout of National Bank Place is sleek, spacious, and refined. As soon as you enter the lobby, the facility captivates you. You are further engaged in the auditoriums, cafeteria, and health and wellness center. That feeling comes from the elaborate art and content featured on video walls, wayfinding displays, projectors, speakers, and microphones.

AVI-SPL Canada tech experts worked closely with National Bank’s experience leaders to design the audiovisual technology for these interactive environments.



“

Your expertise and knowledge allowed us to make the right choices for these non-standard rooms with atypical design. We needed to select the right products to meet our core objectives: simplicity, intuitiveness, and customer experience.”

Maxime Migneault, AV Solutions Integrator at National Bank

“This is where AVI-SPL’s expertise truly came into play,” said Migneault. AVI-SPL tech experts and bank experience leaders selected [Bose](#) speakers, [Draper](#) projection screens, [Epson](#) projectors, [Q-SYS](#) core processors, and [Sennheiser](#) microphones.

Perceptive integration powered by quality control and adaptive tech support

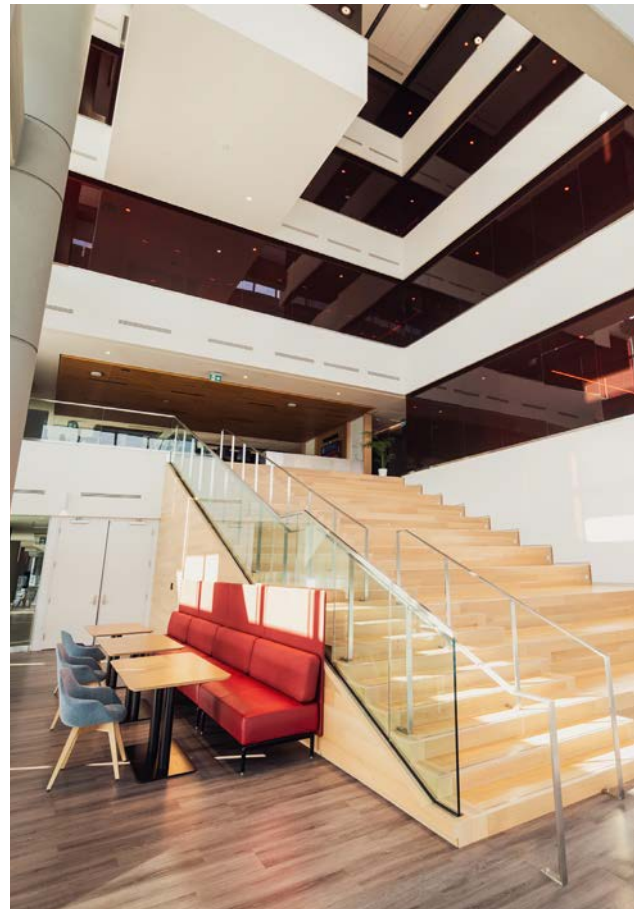
Supply chain issues and labor shortages created construction delays, requiring last-minute adjustments. AVI-SPL technicians adapted to each delay, efficiently implementing solutions with minimal corrections.

Migneault shared, “I believe this is where the delivery process offered by AVI-SPL distinguished itself. The quality control during the planning and execution and the project manager’s knowledge made a remarkable difference and allowed us to deploy our rooms as needed and with a very high level of confidence that the technology would be in place.”

Result: A modern workplace in tune with the heartbeat of a city

National Bank Place designers and architects crafted a contemporary workplace experience supporting hybrid work and fostering community. By partnering with AVI-SPL, National Bank delivered on that vision. The result was a streamlined, flexible workplace that meets today’s and tomorrow’s demands.

A total of 425 conference rooms feature user-friendly collaboration technology solutions. Dynamic AV solutions foster connectivity and engagement across the building’s gathering spaces. And employees and stakeholders are enjoying the enhanced experience. “People are happy in this modern and functional environment,” said Migneault.



Future-ready collaboration solutions delivered, inspiring ongoing support

AVI-SPL enabled National Bank to achieve its vision for a modern, collaborative headquarters through strategic planning, expert deployment, and proactive long-term support. Our personalized AV and UC solutions and expertise helped:

- Overcome construction delays and labor shortages
- Transition the organization to a user-friendly hybrid work model
- Standardize meeting experiences across 425 rooms
- Build a scalable infrastructure supporting international offices
- Create engaging and intuitive gathering space experiences

The successful partnership led to investment in [AVI-SPL Onsite Managed Services](#) and [Global Support and Maintenance](#) for long-term AV and UC solution management.

Migneault noted, “[AVI-SPL] technicians are incredibly useful and enable us to be more efficient in supporting our users. Thanks to the integration of our platforms and the simplicity of communication, they can be proactive and act before issues even arise. Many of our users are pleasantly surprised by AVI-SPL’s ability to solve problems with speed and precision. We call that true efficiency and effectiveness!”

AVI-SPL is your trusted partner for large-scale workplace technology upgrades. We provide personalized guidance and technology solutions that bring your vision to life. From design to deployment to management, we’ll help you confidently navigate the future of workplace technology. No matter where you are on your journey to plan, deploy, operate, or optimize your collaboration environment, we can support you. If you’re planning such upgrades, [contact us today](#) to explore how we can assist.



A photograph of a modern office interior. The space features large glass windows on the right side, allowing natural light to enter. A prominent concrete pillar stands in the center. In the foreground, there is a colorful striped bench and a red armchair. The floor is made of light-colored wood. The ceiling has a grid pattern with recessed lighting. In the background, there are office desks and chairs.

“

Most importantly, leadership member office technology received an extremely positive welcome because they finally had access to simple and functional systems. Most employees appreciate that every floor had the same types of rooms and technologies. It made it easier for them to use.”

Maxime Migneault, AV Solutions
Integrator at National Bank



SEAMLESS GLOBAL COLLABORATION BEGINS WITH EFFECTIVE DEPLOYMENT

Deliver reliable, future-ready collaboration globally with trusted tech deployment

Throughout this edition of our concept catalog, we've highlighted the essential elements of achieving a future-ready workplace.

Whether we're integrating new audiovisual (AV) and unified communications (UC) systems or introducing immersive tech in our transition spaces, one factor remains critical. Consistent global collaboration and office experiences depend on how we deploy devices worldwide.

But global deployment isn't one-size-fits-all. That's why the right technology solutions provider matters.

Accounting for regional differences in technology and practices

Technology deployment across global regions can raise a number of questions. Can every location support the same experience? What about differences in power standards, construction practices, or even the availability of equipment? Each region brings its own set of variables that can shift the entire deployment strategy.

AVI-SPL's vice president of global deployment, Mandy Scheller, describes some additional key considerations:

"There are nuances around procuring and shipping equipment around the world. It doesn't mean you can't do it. However, there are some very different considerations for every country. This may involve navigating customs, obtaining local technical certifications for products, and varying taxes."



If done improperly, deployment can result in equipment and install delays, reduced productivity, and harm to your bottom line. These challenges require a thoughtful and well-informed deployment approach that balances the global landscape with local precision.



A specialized program to navigate tech deployment

At AVI-SPL, we craft personalized technology solutions to improve how we work globally. At the heart of each solution is simplicity in design, deployment, and operation.

Simplicity is especially important when navigating [global tech deployment](#). Our experts serve as your guide throughout the process. We ensure a smooth and worry-free experience from planning to execution by:



Streamlining launches with accurate project planning

Studying equipment variances and availability, global discounts, local pricing, and local economic factors for globally informed proposals.



Minimizing costs with local procurement strategies

AVI-SPL acquires collaboration technology solutions in the countries where we deliver them.



Ensuring consistency with scalable, repeatable solutions

We collaborate with leading manufacturers, including Crestron, Microsoft, HP Poly, Cisco, Zoom, and others, to deliver repeatable solutions that ensure easy installation and consistent management and user experiences.



Simplifying communication with a dedicated program manager

Ensures clear communication between you and our local experts throughout the deployment process.



Providing 24/7 support at every stage

We are your single point of contact for worldwide assistance. AVI-SPL provides remote assistance around the clock, field support where and when needed, and ongoing lifecycle support.

+

+

+



A strategic presence for reliable global delivery

No two organizations have the same deployment needs. That's why our global presence and deep expertise are key to delivering consistent, high-quality results anywhere in the world.

With over 70 offices worldwide, our global team can ensure consistency in deployment and experience.

AVI-SPL continues to widen its office footprint to support tech deployment with local experts who understand and can navigate local power standards, construction norms, and cultural nuances.

"We are where our customers are," said Scheller. "We're able to not only commit to support their installations today, but also for the long term. This is reflected in our expansion into India, as well as our recent investments in South America and Spain, [following the acquisition of ICAP Global](#). Our experts can resolve potential deployment issues and ultimately be a solution for day-to-day challenges."

Deploy tech confidently with a partner you can trust

Successful future-ready global collaboration requires flawless deployment. And personalized third-party expertise can be the difference between struggling with delays and delivering a seamless, consistent experience.

AVI-SPL's senior vice president of technology and innovation, John Bailey, said, "If you are preparing an enterprise-wide infrastructure launch or refresh,



get a partner involved early and consistently to assess, plan, and manage your tech deployment successfully. You don't have to go it alone."

AVI-SPL brings the expertise, reach, and local insight to deliver consistent, reliable AV and UC experiences, no matter the location. From planning to deployment to operation, we simplify the complex and make your digital workplace vision a reality.

[Connect with AVI-SPL](#) today to deploy your workplace technology with consistency and confidence globally.



DESIGNING A GREENER FUTURE: SUSTAINABLE TECHNOLOGY FOR THE MODERN WORKPLACE



Hybrid work continues to evolve, and with it, the demands of workplace technology.

According to a recent [global occupancy benchmarking report from JLL](#), 87% of organizations have adopted hybrid work models. At the same time, there's a growing trend of employees spending more time on-site. This shift underscores the need for flexible, video-enabled spaces that support human experiences for all.

In turn, expanding technology in the workplace also triggers environmental impact concerns. That's why [sustainability](#) is becoming a key factor in AV and collaboration technology planning. IT leaders are now looking beyond performance and cost to choose partners who can help them deliver exceptional user experiences while advancing their organization's sustainability goals. Future-ready solutions must not only enable collaboration, but they must do so responsibly with a people-first approach.

From energy-efficient system design to responsible product life cycle planning, AVI-SPL helps organizations create smarter, greener work environments without compromising on innovation or user experience. To do this, we work with you to explore guiding questions, including “How can your technology decisions be truly future-ready?” And, fundamentally, what does a sustainable solution genuinely look like?”

We approach this by considering four key dimensions of sustainable design:

- Space
- Technology
- Experience
- Governance

By examining these facets, we can create solutions that are innovative and effective and mindful of our planet and its resources.

87%

Hybrid working is now the most common work style globally, as 87% of organizations report having a hybrid program and 49% plan to expand those programs.

– JLL Global Occupancy Planning Benchmarking Report 2024

Sustainable Workspaces: Flexibility with Purpose

You can reduce your real estate footprint by optimizing your workplace floor plan to meet the purpose and activities of your people. Today, hybrid teams expect spaces ready to adapt to their evolving needs as the workplace changes. Consider intelligent responsive building systems that adjust to environmental factors, like sunlight, and human patterns, such as foot traffic, to help power eco-friendly workspaces.

We'll help you create a dynamic ecosystem that needs to adapt to changing needs and workflows. Sustainable workspace design is about redefining the workplace for efficiency and adaptability. This means moving beyond traditional office layouts and embracing designs that maximize space utilization and promote flexibility.

Key design principles for sustainable workspaces include:

- ➔ **Modular, activity-based layouts:** Create versatile spaces that can be easily reconfigured to support different tasks and team sizes that reduce the need for constant, resource-intensive renovations.
- ➔ **Hot-desking and workplace management systems:** Implement intelligent systems that allow for shared desk use and efficient space allocation and minimize underutilized areas and the associated energy consumption.
- ➔ **Responsive building systems:** Integrate smart technologies that automatically adjust lighting, temperature, and other environmental controls based on occupancy and real-time conditions, which leads to significant energy savings.

The emphasis here is on reducing the physical and environmental footprint while enhancing flexibility.

By designing smart and adaptable spaces, we can create work environments that are more productive, engaging, and significantly more sustainable.

Sustainable Technology: Innovation with Impact

Technology itself is a critical component of any eco-friendly AV and UC strategy. When viewed through a sustainability lens, the focus shifts to choosing low-carbon footprint, energy-efficient technology solutions. This involves consciously selecting products and partners that prioritize environmental responsibility throughout the product life cycle.

We are proud to introduce initiatives like [AVI-SPL Eco-Friendly Reference Designs](#), [powered by Logitech](#), which are specifically curated to meet these standards.



Critical features of sustainable technology design to consider include:

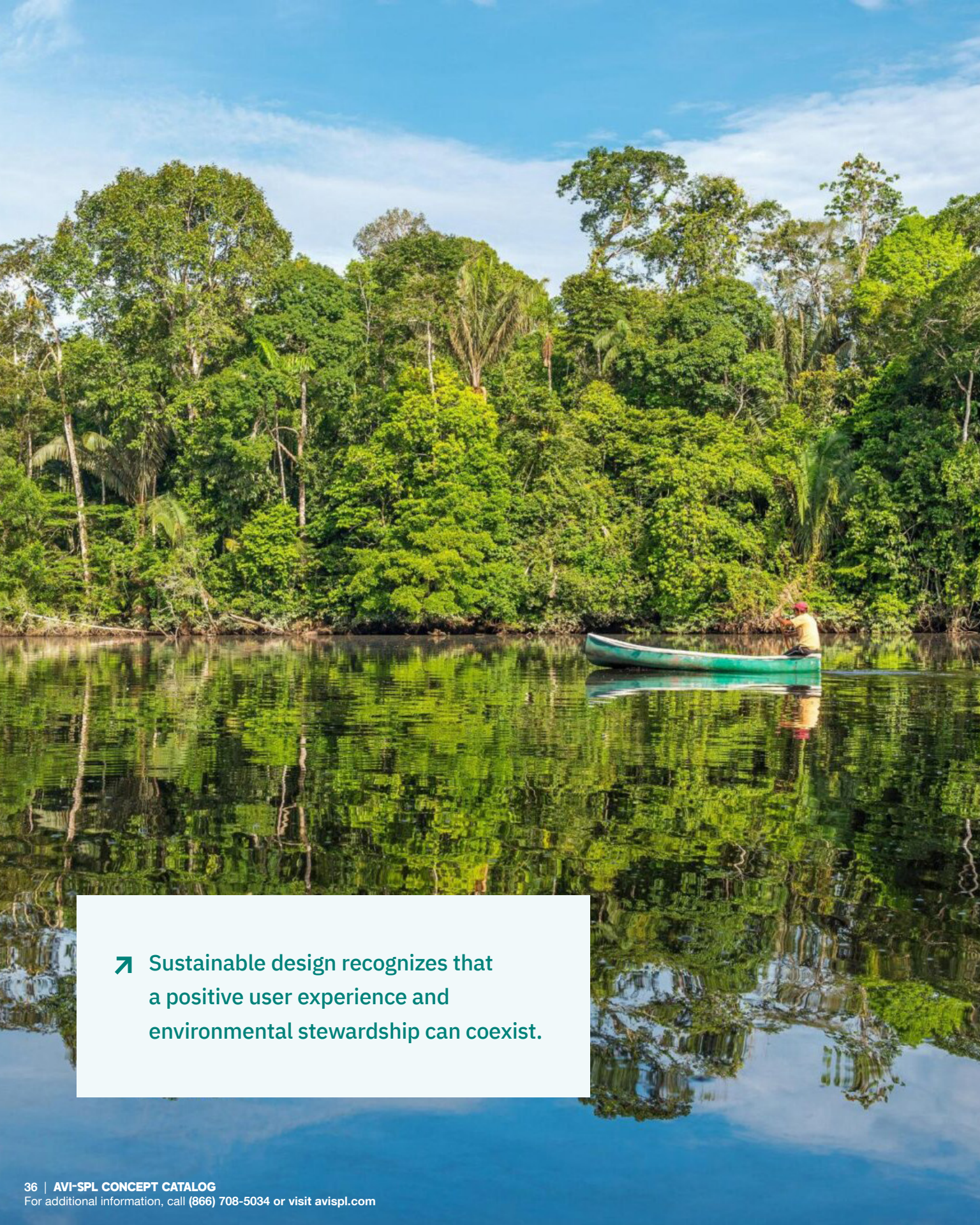
Eco-certified products and vendors: Prioritize equipment that earns recognized environmental certifications. Resources like the [AVI-SPL Supplier Sustainability Matrix](#) can help identify partners committed to sustainable practices. Our matrix covers energy usage, carbon emissions, waste management, life cycle management, social responsibility, certifications, and transparency.

Fewer parts and simpler systems: Opt for solutions that minimize complexity and material usage. For example, Power over Ethernet (PoE) technology reduces the required cabling and typically consumes less energy than traditional power methods.

Standards for scalability and measurable efficiency: Choose technologies that can grow with your organization and provide clear metrics on energy consumption and performance.

Efficient supply chain logistics: Consider the environmental impact of how products are sourced, manufactured, packaged, and transported.

Making informed choices about the technology you deploy can significantly reduce our collective carbon footprint and contribute to a healthier planet.



➤ Sustainable design recognizes that a positive user experience and environmental stewardship can coexist.



Sustainable Experiences: Enhancing People and Planet

Sustainable design recognizes that a positive user experience and environmental stewardship can coexist. It's about finding the harmony between energy savings and creating productive, engaging, and healthy workplace experiences.

Today, facility and technology management goes beyond optimizing performance to optimizing wellness. The latest sensors and systems can detect health markers for people and technology. Essential markers include CO2 in the air, energy usage, space utilization, network bandwidth, and technology performance.

All this data works together to drive the human experience of work. And harmonizing how the environment responds to people creates natural energy savings and cost savings.

That's why monitoring and management platforms like AVI-SPL Symphony are crucial to harmonizing experience and efficiency. For example, Symphony can power down equipment when not in use.

Key aspects include:

- ➔ **Centralized building and technology management tools:** Systems that provide a holistic view of energy consumption and operational efficiency across all AV and UC assets.
- ➔ **Real-time monitoring and optimization:** The ability to track energy usage and performance data that enables immediate adjustments to maximize efficiency.
- ➔ **Eco-mode operation and video compression:** Implementing features within devices and software that automatically reduce power consumption during idle periods or optimize data transmission to lower digital waste.
- ➔ **IoT, AI, and automation:** Leveraging these advanced technologies to create intelligent systems that learn usage patterns and self-optimize energy efficiency without compromising user experience.

When you focus on these elements, your pursuit of sustainability also leads to better, more intuitive, and more satisfying interactions with technology.

Sustainable Governance: Making It Strategic

Embedding sustainability into your organization's strategy requires a clear governance framework. This means framing sustainability through the Triple Bottom Line: people, planet, and profit. It's about recognizing that environmentally sound practices can drive innovation, efficiency, and long-term value.

The design values that guide this governance include:

Simplicity

Solutions should be human-centric, intuitive, and purpose-built to meet genuine needs, avoiding unnecessary complexity that can lead to waste.

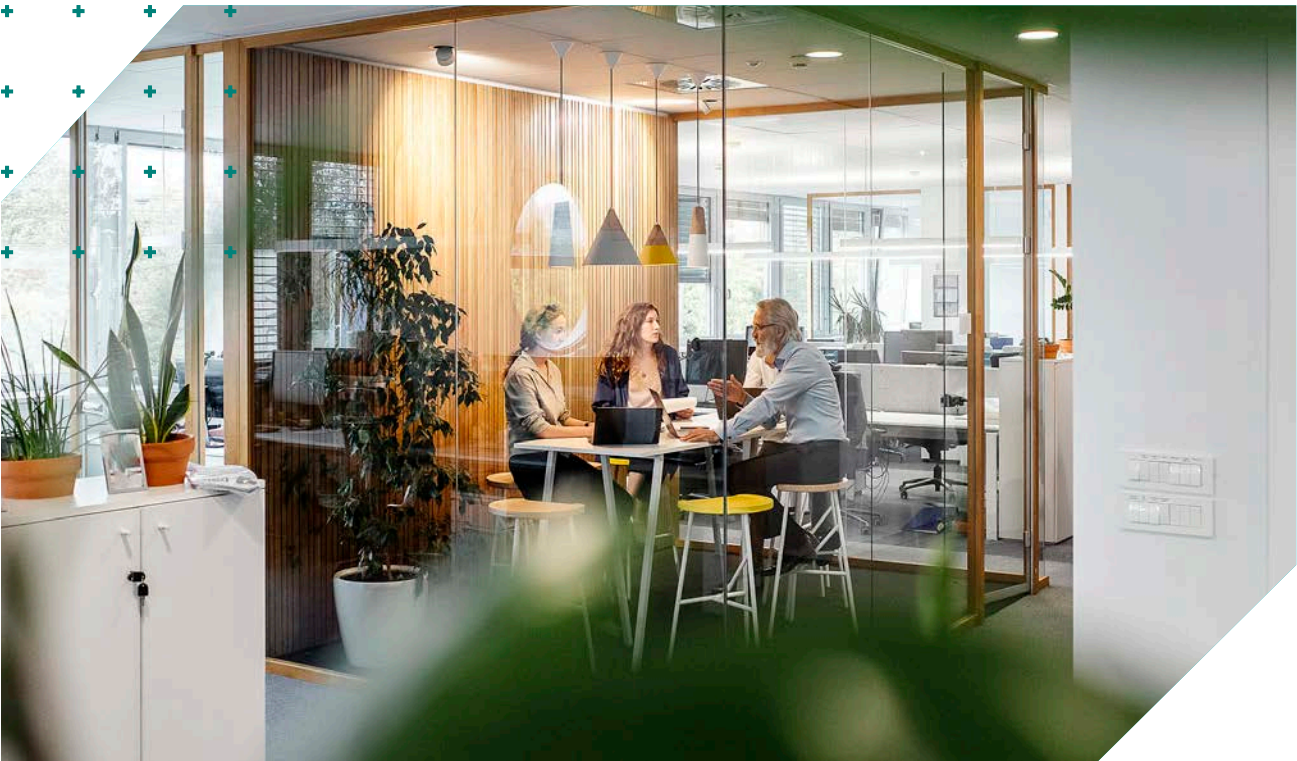
Efficiency

A relentless focus on optimizing the use of space, energy, and materials throughout the life cycle of the technology.

Circularity

Designing for longevity, promoting the extended lifespan of devices, and ensuring responsible recycling and end-of-life management.

This approach means viewing sustainability as a value creator rather than a trade-off. When sustainability is integral to your governance, it becomes a strategic advantage, enhancing brand reputation, attracting talent, and improving overall operational resilience.





Your Partner in a Sustainable Future

The journey towards a more sustainable technological future is a collaborative one. AVI-SPL is committed to being your partner in this sustainable transformation. We possess the expertise, tools, and talent necessary to support our customers in achieving their sustainability goals.



By designing sustainable solutions from the start, your organization positions itself as future-focused and responsible. It's an opportunity to lead by example and demonstrate a commitment that resonates with employees, customers, and stakeholders.

Together, we can reshape what sustainability looks like in the workplace. The question we pose is: How can we partner with you to create a more sustainable future? Let's build that future together.

For more information on our sustainability initiatives and to get started, please visit avispl.com/esg.



CASE STUDY

CARROLLTON BANK

Carrollton Bank and AVI-SPL customize a Microsoft Teams Phone solution to elevate employee and customer communication



→ Organization

Carrollton Bank

→ Location

Carrollton, Illinois

→ Market

Financial Services

→ Solution

Microsoft Teams, CallTower

Microsoft Teams Phone elevates communication and client support

Support and customer experience challenges drive cloud-calling upgrades

Carrollton Bank prides itself on best-in-class financial and customer service. They have been providing commercial financial services in the southwest Illinois and the St. Louis areas for nearly 150 years. When the bank's phone system couldn't keep up with customer service demands, CIO Brenda Emerson knew it was time for a change.

“

I've been adopting new phone systems since 1999. This was literally the best I have ever had. It's great to see how technology has improved – it's simply an amazing experience all around.”

Brenda Emerson, CIO
Carrollton Bank



The bank's existing cloud-calling setup had limited telecom support, scalability challenges due to aging hardware, and expensive re-licensing fees.

Long-time AVI-SPL partner Fran Culbertson helped Emerson explore a modern cloud-based voice solution that could grow with the bank's customer-first mission.

Finding a future-ready cloud-calling solution with AVI-SPL

Culbertson and AVI-SPL professional services experts Mike Schrock and John Bantner assessed Emerson's pain points and goals.

Mike Schrock, AVI-SPL Sr. Solutions Architect, shared, "I hosted calls with Brenda and her team to examine their current state, features, challenges, and what they would like in a new phone system."

Schrock, Bantner, Culbertson, and Emerson collaborated closely to tailor a solution for Carrollton Bank.

"Fran and team really helped me evaluate the value of different cloud-calling solutions," said Emerson.

Given Emerson's needs and goals, a Microsoft Teams Phone solution quickly emerged as the ideal fit.

Why Operator Connect for Microsoft Teams?

FAMILIARITY

Microsoft Teams is a widely adopted platform in many organizations. Since Carrollton Bank employees are already familiar with the platform, managing change remains simple and stress-free.

FEATURES

CallTower's Operator Connect solution seamlessly integrated Microsoft Teams with the SMS text and cloud fax capabilities Carrollton Bank required.

This enhancement allows the bank to meet regulatory compliance and communicate easily with staff, customers, and other stakeholders.

FLEXIBILITY

The Microsoft Teams - CallTower solution also allows employees to support clients without desk phones. The Teams Phone soft client enables employees to support clients from home, the office, or on the go, using a PC or mobile device.

"Another part of CallTower's Microsoft Teams solution Carrollton Bank liked is its failover features," Schrock said. "In the unlikely event Microsoft Teams goes down, IT can transfer numbers to user phones."

“

In our consultative process, we discovered the team was using the Microsoft Teams desktop platform for chat and team presence awareness. It made sense to transition to Teams Phone.”

**Fran Culbertson,
AVI-SPL partner**

Additionally, Schrock quickly identified SMS text and cloud fax as essential tools for Carrollton Bank’s regulatory compliance and customer communication requirements.

Considering SMS text and cloud fax, Schrock proposed Microsoft Teams-certified options, including CallTower’s Operator Connect for Microsoft Teams.

Ultimately, Carrollton Bank selected the CallTower solution to pair with Microsoft Teams Phone.

Managing a seamless migration to CallTower

Upon approval, AVI-SPL services teams led the transition to CallTower.

AVI-SPL Project Management Manager Jenna Sanders facilitated working sessions with CallTower and Carrollton Bank to ensure a stress-free migration.

“This project could not have gone smoother,” said Sanders.

AVI-SPL deployment teams ensured Carrollton Bank environments were voice-enabled, connected to Microsoft and CallTower, and that phone numbers were successfully ported.

CallTower’s Senior Director of Global Alliances, Bryan Green, praised the collaboration, “We are a PSTN provider. And [AVI-SPL] has a deep bench of experienced engineers. They understand [CallTower’s] product. When you combine the PSTN and AVI-SPL professional services, it cuts through the clutter.”

Results: Flawless adoption, standardized communication, and elevated client support

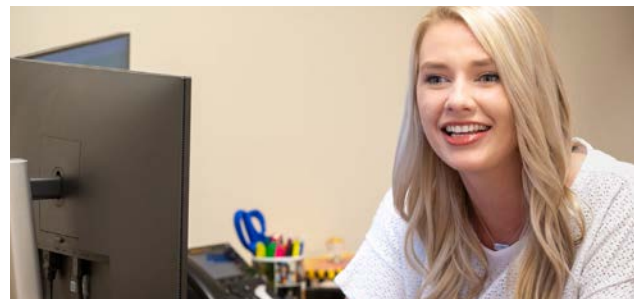
“I’ve been adopting new phone systems since 1999,” Emerson said. “This was literally the best I have ever had. It’s great to see how technology has improved – it’s simply an amazing experience all around.

Employees quickly adapted to Microsoft Teams Phone, taking full advantage of its mobile-friendly features. CT Text SMS services and CT Cloud Fax solutions allowed Carrollton Bank to stay current with regulatory standards while improving efficiency.

Access to Microsoft Teams, text, and fax simplified communication across branches and enhanced the bank’s signature customer experience.

“We are over 40 days into the transition. Everybody has been really responsive,” Emerson noted.

Considering a [cloud calling](#) or [contact center](#) upgrade? Our voice experts and professional services teams are ready to help you find and customize a solution that grows with your organization. Let’s chat about how we can make your transition as simple as Carrollton Bank’s. [Reach out to us today!](#)



CLOUD CALLING AND CONTACT CENTERS

Simplify how your teams collaborate. Support your mobile workforce. Enhance your customer support experience.



Future-ready voice solutions and services to elevate collaboration and customer service.

Voice cloud migration and consulting

- Expert voice deployment and UC integration
- Legacy systems and cloud-readiness support
- Vendor-agnostic solutions
- Cloud calling license management and hardware procurement

Contact Center as a Service (CCaaS)

- Flexible support options, voice, chat, in-app messaging, and more
- CRM integration for better customer interaction
- Easy SME access for faster problem resolution
- On-demand analytics and customer insights

Email AVI-SPL at contact@avispl.com to plan your future-ready voice and support platform.

We partner with the top names
in cloud communication



Google Workspace

Microsoft Teams

zoom



logitech



Yealink

8x8

audiocodes

AVAYA



GENESYS

NICE CXone

RingCentral



STAY FUTURE-READY BY PROTECTING ENTERPRISE CONTROL SYSTEMS



How many of us have updated to the latest software on our phone or pushed updates live on a laptop, only for the device to start running slower immediately? Maybe the battery drains faster. Or perhaps a glitch occurs when you open a favorite app.

Device lag is just one of the issues that end users face. Imagine this happening across your enterprise. However, instead of devices running slower or experiencing the occasional glitch, entire control systems and other devices fail to function.

Control and automation programming is an additional burden on top of tech acquisition that

you shouldn't have to manage. You could isolate systems from your network. However, that opens your enterprise to greater risks.

At AVI-SPL, we have a team of programmers who proactively test control system programming and automation to ensure updates keep your infrastructure in a future-ready state. Here's how.

Compatibility and functionality testing

AV teams once followed the mindset: “If it’s working, don’t update it.” But today’s work environments demand flexibility, speed, and constant improvement. In AV/IT, that means regularly enhancing the user experience—even when the hardware stays the same. To meet those expectations, many vendors now push software updates automatically, whether systems are ready or not.



You may only buy a piece of hardware once over three or four years,” said David Thorson, AVI-SPL’s vice president of programming systems integration. “But in that time, you will likely get many feature and user experience (UX) updates with fresh software because of that. These new features, while they have a positive impact on the latest hardware, can slow others in our ecosystems.”

AVI-SPL programming experts regularly test these updates before launch. Our teams ensure software

updates do not disrupt existing systems, maintain functionality, and reduce the risk of failure.

Security testing

Control systems have been shifting to standards-based languages (C#, JavaScript, Python, LUA, etc.) and moving away from proprietary languages (SIMPL, Netlinx). As we adopt more modern languages, we must consider that this opens up possibilities for programmers to leverage source code from unknown sources. We must ask:

- How do we know where that source code is coming from?
- Does that source code have any vulnerabilities?
- Does that source code have any terms of use?
- Is there any open source code used?

AVI-SPL has a defined software development life cycle (SDLC) that uses version control (git) and a CI/CD platform (GitLab) to define, manage, and deploy source code. That SDLC allows our experts to have visibility into source code changes.

“We ensure that our deployment process packages all source code consistently.” This ensures there is a healthy history of changes and maintains enterprise quality,” said Thorson. “New to AVI-SPL is our ability to enhance our security posture with source code scanning for security vulnerabilities and secrets. This process checks software license compliance and ability to define enhanced compliance and governance processes.”

User experience testing and design

Firmware updates can improve user experiences. However, those updates may also introduce lag, glitches, or other issues.

AVI-SPL programming teams identify and resolve user experience issues before your staff ever encounters them. And when a new UX goes live, they can bring users up to speed on changes faster.

In addition to testing, AVI-SPL has a dedicated graphic design team that personalizes user interfaces to meet an organization's specific needs.

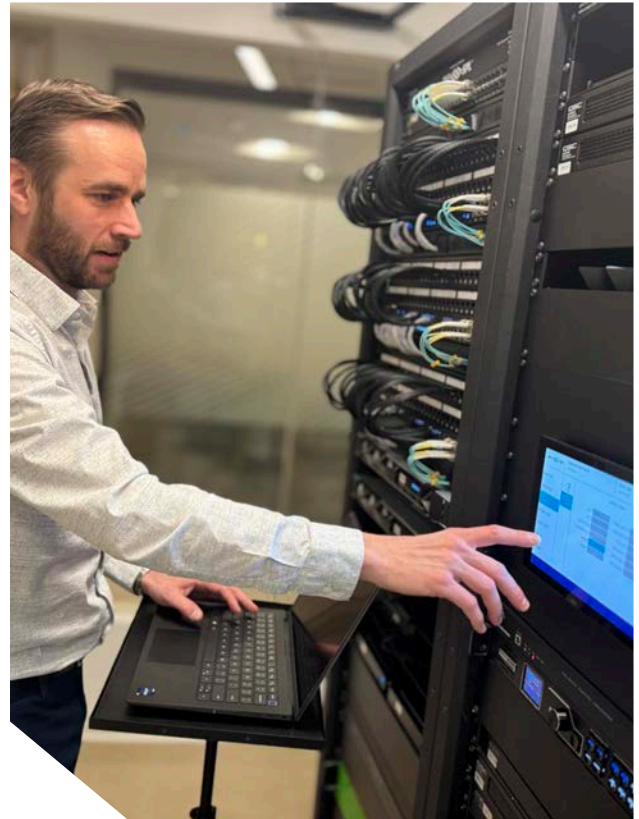
Some enterprises have collaboration spaces with devices in their as is state. Others rely on a customized design approach with standardized equipment throughout their footprint. But interfaces are specific to each provider.

A well-thought-out flagship design can streamline user interaction and enhance the overall experience. AVI-SPL programming and design experts can tailor interface experiences to suit your team's work style.

"In our programming design workshop, AVI-SPL program designers can develop purpose-built concepts with wireframes," Thorson shared. "We can standardize these designs for a seamless UI experience across the enterprise."

Find confidence with AVI-SPL automated software testing

AVI-SPL has developed software to perform unit and integration tests of the latest software at the API layer for any harmful issues. Our programming



experts use full system mock-ups to replicate client experiences.

"We replicate user experiences in our one-of-a-kind API test lab," said Thorson. "In it, we use software that runs up to thousands of automated module tests. In just hours, tested systems share firmware and software status reports checking for errors, backward compatibility, and more."

AVI-SPL programmers ensure that new firmware and software are safe to download and compatible with current devices.

If system updates are a balancing act in your organization, or you have security concerns, AVI-SPL's programming experts can help.

Contact our experts to gain clarity and peace of mind with your control system today.



➤ AVI-SPL programmers ensure that new firmware and software are safe to download and compatible with current devices.



WE PARTNER WITH THE BEST TO GIVE YOU THE BEST

AVI-SPL works with technology vendors who do more than provide the products for our solutions. We can rely on their expertise and support in any environment. This dedication to teamwork is done with one goal in mind – earning our clients' satisfaction.

OUR PREFERRED TECHNOLOGY PARTNERS



Crestron builds the technology that integrates technology. Its automation and control solutions for buildings integrate systems such as AV, lighting, shading, security, BMS and HVAC to provide greater comfort, convenience, and security. All of its products are designed and built to work together as a complete system, providing the ability to monitor, manage, and control everything from one platform.



Poly is now part of HP. The rise of remote and hybrid work has created huge demand for solutions that make new ways of collaboration and co-creation possible. The combination HP and Poly paves the way to create the hybrid work experiences of the future. HP Poly creates premium audio and video products so you can have your best meeting -- anywhere, anytime, every time. With HP Poly, you'll do more than just show up, you'll stand out.



Logitech designs workspace solutions that make equitable working experiences possible for everyone. We help teams work better together, from anywhere, without compromising on quality, productivity, or the creativity that comes from collaboration.



Neat is a Norwegian video technology company providing a complete portfolio of pioneering devices that address any space in today's modern workplace. Designing engaging experiences that allow you to meet, create and collaborate whenever, wherever and however you want, Neat devices natively support Microsoft Teams, Zoom and a range of compelling business applications. Neat inspires people to unleash their creativity and "flow with the moment," giving everyone the choice and flexibility to always be at their best. For more information, visit neat.no.



Q-SYS is a cloud-manageable audio, video and control (AV&C) Platform built around a modern, standards-based IT architecture. Since its inception in 2009, it has been architected to deliver personalized, connected and engaging AV experiences. With established solutions across corporate, education, hospitality, venues & events, cinema, government, healthcare, and transportation, Q-SYS redefines what is possible for live and virtual experiences by uniting hardware and software partners, developers, and creators.



Shure creates audio and networking solutions for AV conferencing and has turned a passion for making great microphones and audio electronics into an obsession. No wonder Shure continues to set the worldwide industry standard for superior microphones and audio electronics.



ClickShare

ClickShare is Barco's award-winning wireless meeting room system for easy video conferencing, collaboration and presentation. It connects your laptop to the audio and video equipment of your conference room, so you can start your meeting with one click via the ClickShare Button or App. For seamless hybrid meetings in Teams BYOD Spaces and simple content sharing in Teams rooms. No cables, no hassle. ClickShare comes in two ranges: wireless conferencing solutions for effortless hybrid collaboration, and wireless presentation solutions for content sharing in face-to-face meetings.



Pro audio is about creating incredible experiences, and those experiences don't just happen. They need to be built, one piece at a time. That's why Bose is here. Bose loudspeakers, amplifiers, and processors deliver great sound in spaces all around the world — lecture halls, corporate buildings, places of worship, stadiums, restaurants, retail stores, and more.



Cisco delivers innovative software-defined networking, cloud, and security solutions to help transform your business, empowering an inclusive future for all. The business collaboration solutions that Cisco has developed allows individuals to connect, communicate, and collaborate securely and reliably from anywhere.

EPSON®

Epson, the number-one selling projector brand worldwide, creates innovative projection technologies for business, education, and the home. Using industry-leading 3LCD technology, Epson offers a complete line of interactive, ultraportable, and installation projectors designed to deliver quality, reliability, and cost-effective performance.



Hej. (That's 'hi' in Danish.) We're Jabra. We engineer technology that makes life look and sound better. And you? You might be running a work project from, well, anywhere. Or running your first 5k to a playlist sounding like you've never heard. Or pitching via video from Toronto to Tokyo. Whatever you've got going on, we've got you. With world-leading video and voice call technology. And perfectly engineered earbuds and headphones. Jabra. Technology for life's new rhythm.

legrand® | AV

Legrand is the global specialist in electrical and digital building infrastructures. Its comprehensive offering of solutions for commercial, industrial and residential markets makes it a benchmark for customers worldwide. In the AV space, Legrand | AV offers an extended portfolio of branded audiovisual products including flat panel mounting solutions, projector mounts, projection screens, switches, routers, cabling and connectivity, equipment racks, PTZ cameras and furniture for Commercial AV markets. Its innovative products are sold under the C2G, Chief, Da-Lite, Luxul, Middle Atlantic, and Vaddio brand names.



Fostering a culture of employee engagement, boosting team collaboration, and improving productivity are critical. LG's TVs, large displays, video walls, touch displays, and desktop monitors are perfect for your huddle spaces, lobbies, classrooms, and large conference rooms. LG's wide variety of displays and Cisco® and Crestron® compatibility meet the needs of virtually any meeting space, including the UH5F series displays with webOS™ that can deliver brilliant Ultra HD images. With advanced IPS screen technology and anti-glare coating, LG displays can be viewed comfortably in brightly lit rooms by nearly everyone.



Enable your hybrid workplace with Microsoft Teams to stay connected and access shared content any time to learn, plan, and innovate—together with Microsoft solutions. With Microsoft Teams, Teams Rooms, and Microsoft Surface Hub 3, everyone will feel seen and heard no matter where they are. You'll enable your teams to do their best work, their way. With Coordinated Join, you can seamlessly connect all your Microsoft Teams Rooms Devices. AVI-SPL will plan, deploy, operate, and optimize your Microsoft solutions and user experience.

Panasonic

Panasonic Projector & Display Americas (PPNDA) is committed to delivering innovative visual solutions across education, corporate and entertainment industries. The PPNDA mission and dedication is to empower professionals in the AV industry to focus on the art of storytelling, the power of communication, and the joy of connecting people through shared experiences.

PHILIPS

Professional Displays

Philips Professional Displays bring vision to business. Discover power and paper free ePaper displays, creatively adaptable dvLED, best-in-class interactive, versatile digital signage and feature-rich pro TVs. Delivering on crystal-clear picture quality complemented by unrivalled functionality. The secure flexibility of a professional Android SoC enabling powerful integrations. And remote device management powered by Philips Wave. All ensuring total solutions for sustainable growth across all industries.

SAMSUNG

Samsung is a global leader in enterprise mobility and information technology. Samsung provides enterprise products and services that help customers realize the promise of digital business. Its flagship company, Samsung Electronics, leads the global market in high-tech electronics manufacturing and digital media, and their recent acquisition of Harman further strengthens their brand.



Sennheiser is shaping the Future of Audio - a vision built on a 75-year history of innovation and a continued drive for excellence that is woven into our company's DNA and culture. Sennheiser is one of the world's leading producers of microphones and wireless transmission technology. The family-owned company operates its own plants in Germany, Ireland and the US and is active in more than 50 countries worldwide.

SHARP®

Sharp is at the forefront of technological innovation and advancement with a rich heritage of expertise in transforming the way organizations engage their target audiences. With unmatched customer service and principal product quality, Sharp offers the widest portfolio of cutting-edge visual solutions to fit its customers' needs. Sharp provides innovative displays, projectors, digital solutions and services to their diverse client base across the education, enterprise, healthcare, retail, transportation, broadcast, and house of worship industries.

SONY®

Sony Professional Display Solutions provide an end-to-end portfolio of presentation, collaboration, and remote communication solutions that inspire creativity and stimulate curiosity. Learn more about the latest in corporate, education, retail, transportation, entertainment and healthcare AV innovations, including projectors, displays and direct view LED video walls, speakers and microphones, and imaging and analytics solutions from Sony and its expanding partnerships.





Everyone in view, all the time

CRESTRON SIGHTLINE EXPERIENCE

No more feeling like a spectator. Thanks to a unique combination of intelligent video with multi-camera speaker tracking and multiple in-room displays, the Crestron Sightline Experience gives everyone an equal seat at the table. And a new and more natural perspective on hybrid collaboration.

The Crestron Sightline Experience elevates hybrid meetings by enabling maximum visibility, maximum participation, and maximum convenience.

Explore Sightline in greater detail:
avispl.com/crestron/

TRY OUR VIRTUAL
DEMO AND DISCOVER
HOW THE CRESTRON
SIGHTLINE EXPERIENCE
CAN TRANSFORM THE
WAY YOU MEET:



Works with Microsoft Teams® or Zoom Rooms® software.



All brand names, product names, and trademarks are the property of their respective owners. Certain trademarks, registered trademarks, and trade names may be used in this document to refer to either the entities claiming the marks and names or their products. Crestron disclaims any proprietary interest in the marks and names of others. Crestron is not responsible for errors in typography or photography. © 2025 Crestron Electronics, Inc.



ALL TOGETHER

MEETING EQUALITY: THE KEY TO STELLER VIRTUAL COLLABORATION

Whether in-office, remote or a combination of both, Poly is uniquely situated to provide users with the optimal setup at the best value across your entire team. We want to establish and maintain meeting equality – it's our goal. Because if we do that, we'll be helping you and your organization reach yours.



POLY COLLABORATION SOLUTIONS BRING PARTICIPANTS TOGETHER IN THE HYBRID WORKPLACE

IN-OFFICE SOLUTIONS OFFER



Intelligent video conferencing bars and systems for meeting spaces.



An equal voice at the table with **intuitive conference phones**.



Broadcast-quality video conferencing cameras.



Easy concentration with **noise-blocking enterprise-grade headphones**.

REMOTE SOLUTIONS OFFER



The best angle via video conferencing **cameras with a 74-degree view**.



Unparalleled audio clarity with **USB and Bluetooth speakerphones**.



Portable, light-correcting webcams that connect to any device.



Quality audio wherever you go thanks to **enterprise-grade headsets**.

Find more information about Poly's end to end solutions at avispl.com/poly.



Designed for sustainability,
built for success.

Logitech is leading the industry in sustainability.



Meet the moment with Logitech.

The new work landscape demands a better way—one that fosters collaboration and boosts productivity. Along with this, Logitech prioritizes sustainability. We are committed to designing sustainable solutions, as shown below in the percentages indicating each product's **post-consumer recycled plastic (PCR)**.



Low carbon
aluminium



Recycled
plastics



Smart Battery
Efficiency



Responsible
packaging



Carbon
Clarity

Team workspaces



Rally Bar

All-in-one video bar for
medium to large rooms
PCR 40%



Sight

Tabletop camera with
intelligent framing
PCR 59%



Tap

Video meeting
touch controller
PCR 56%



Tap Scheduler

Scheduling panel for
meeting rooms
PCR 36%

Personal workspaces



MX Brio 705 for Business

4K video experience,
AI image enhancement,
auto-framing
PCR 82%



Logi Dock Flex

A managed docking
station for easy desk
booking experiences
PCR 36%



Zone Wireless 2

AI noise suppression,
4 noise cancelling mics,
hybrid ANC
PCR 20%



Signature Slim Combo MK955

Compact & slim wireless
combo, Logi Bolt receiver,
customizable shortcuts
PCR 62%

LEARN MORE AT [AVISPL.COM/LOGITECH](https://avispl.com/logitech)

© 2024 Logitech. All rights reserved. Logitech, the Logitech logo and other Logitech marks are owned by Logitech and may be registered. All other trademarks are the property of their respective owners. Logitech assumes no responsibility for any errors that may appear in this publication. Product, pricing and feature information contained herein is subject to change without notice.

neat.

avispl.com/neat



Beautifully simple video devices.

Neat video devices help people connect with more natural, inclusive, and engaging meeting experiences—making collaboration feel effortless, from anywhere.



Elevate Your Hybrid Experiences with AI

Intelligent presenter tracking and audio-based camera switching

Q-SYS VisionSuite enhances the visibility of participants in the room, providing a more natural viewing experience for remote attendees and enabling teams to feel connected and engaged, regardless of their location. It features AI-enhanced computer vision technology, intelligent audio-based automatic camera switching, flexible camera options, and vision-driven room automation.

Explore more at avispl.com/q-sys



DREAM TEAM ESSENTIALS

SHURE

INTELLIMIX

+ ROOM KITS

+ MXA902



+ COMPUTE



+ TOUCH PANEL

+ HUDDL L1



Enhance collaboration in Microsoft Teams Rooms with Shure IntelliMix Room Kits, engineered to meet today's hybrid work demands, offering top-tier audio and video performance.

Each kit includes a Windows-based Teams Rooms compute with Shure's premium audio processing, an intuitive touch panel, a ceiling array microphone and loudspeaker, and high-resolution video.

The seamless integration of all components combined with zero-touch provisioning reduces deployment time and simplifies management across multiple systems, effortlessly delivering high-quality experiences in small, medium, and large collaboration spaces.

avispl.com/shure

© 2025 Shure Incorporated



The next step in meeting room technology is just one tap away

Step into effortless collaboration with ClickShare Hub – a modular wireless video conferencing room system that lets you enjoy video meetings with ultra-high-definition content sharing. Start meetings with a simple tap on the Control Panel and connect with room devices such as audio, camera, video bars, speakers.

Designed for modern meeting spaces, ClickShare Hub is easy to deploy within existing company infrastructure — ensuring enterprise-grade security, simplified setup, and consistent performance.

Make every meeting seamless, more engaging, and secure with the ClickShare Hub.

Discover EdgeMax

*Surface-mount performance
meets stealth-mode design*



PhaseGuide® technology.

Patented PhaseGuide technology evenly distributes sound asymmetrically throughout the space to ensure all listeners enjoy the same experience—regardless of their location.



Powerful two-way sound.

High-frequency compression driver and high-excursion woofer for exceptional audio quality and power. Wall boundary loading provides greater bass response.



More sound.

Fewer loudspeakers.

EdgeMax loudspeakers are engineered to be installed in corners and along ceiling edges, projecting sound inward for room-filling coverage. This means fewer units required compared to typical loudspeakers.

Visit <https://avispl.com/bose-professional/>
to learn how we can help you transform your space with sound

Why settle for less...

When you can have more?



See and be seen.



Epson Laser Projectors. Collaboration Without Limits.

Epson's big, ultra-wide, immersive displays deliver an experience typical flat-panels cannot. There's no need to sacrifice content. View presentations, chats, virtual attendees, and more. Now everyone can see, be seen, and collaborate — whether remote or in-person.

[AVISPL.com/epson](https://avispl.com/epson)

EPSON is a registered trademark of Seiko Epson Corporation. All other product and brand names are trademarks and/or registered trademarks of their respective companies. Epson disclaims any and all rights to these marks. Copyright 2023 Epson America, Inc.

EPSON®

BIG

ULTRA-WIDE

SEAMLESS

Jabra GN

Freedom to work your way with AI-powered solutions



PanaCast 40 VBS

Available Mid 2025

The only small room Android™ bar that captures the entire room.



Evolve2 50



PanaCast 50 VBS

Jabra's state-of-the-art video and audio solutions, enhanced by AI, empower you to succeed no matter where your work takes you. Jabra's AI-powered video solutions future-proof your meetings, enabling inclusive collaboration. Redefining the concept of 'work is where you are,' our technology turns this idea into a tangible reality, enabling inclusive meetings and collaboration. Enjoy unparalleled freedom and productivity, whether you're in the office, at home, or on the move.



EMPOWERING YOUR FUTURE WITH PERSONALIZED SOLUTIONS FROM LEGRAND | AV

Whether you're creating dynamic learning environments in education or fostering seamless collaboration in corporate settings specializing in Microsoft Teams Rooms, our industry-leading brands deliver integrated solutions for any space.



MIDDLE ATLANTIC
Forum™ Collaboration
Suite Display Stand
and Shroud



MIDDLE ATLANTIC
Forum™ Arc Tables

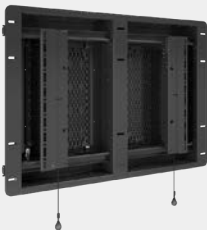


MIDDLE ATLANTIC
Forum™ Lectern



VADDIO
IntelliSHOT-M
Auto-Tracking Camera

Certified for
Microsoft Teams



CHIEF
Tempo™ Flat Panel
In-Wall Mount System



CHIEF
Tempo™ Flat Panel Wall
Mount System



BrightSign®

UV5N-E UHD with BrightSignOS™ The Ultimate Digital Signage Solution



Stunning 4K UHD Clarity - Built for 24/7 Reliability - Secure & Simple to Manage

Why LG UV5N-E Stands Out:

- **4K UHD Brilliance:** IPS panel with 500-nit brightness delivers vivid, distortion-free visuals from any angle—ideal for retail, hospitality, or corporate spaces.
- **Space-Smart Design:** Ultra-narrow 8.9mm bezels and hidden cabling enable sleek, near-flush wall mounting (just 0.5" clearance).
- **Enterprise-Grade Security:** BrightSignOS™ ensures virus-free operation with remote monitoring via free bsn.Control and compatibility with 100+ CMS platforms.
- **Built to Last:** IP5X dust resistance, conformal coating, and 30° tilt adaptability for harsh environments.

BrightSignOS™ Powered:

The UV5N-E utilizes BrightSignOS™, a leading digital signage operating system.

Key BrightSignOS™ Features:

- Security
- Reliability
- Sustainability
- Comprehensive Support
- Enables remote multi-device monitoring.
- bsn.Control Subscription:
 - Includes a free bsn.Control subscription.
- CMS Integration:
 - Offers seamless integration with over 100 Content Management System (CMS) solutions

Transform your customer
engagement with LG's
cutting-edge signage.

Let's work together.
avispl.com/lg



Deliver a consistent, simple experience in all workspaces with Surface Hub 3

Unleash a host of innovative features to enhance hybrid work.

Smart rotation and portrait mode: Surface Hub 3, available in a 50" display, offers the flexibility to physically rotate between portrait and landscape orientations.

Premium design for inclusive meetings: Surface Hub 3 prioritizes inclusive meetings by delivering clear audio and visuals, enhancing the overall meeting experience.

AI-powered team collaboration: The Surface Hub 3 represents a significant leap forward in leveraging AI for enhanced hybrid meetings and collaborative sessions.

➤ [Read more](#) about how Surface Hub 3S can help bring your teams together in a hybrid workplace.



© 2023 Microsoft Corporation. All rights reserved.

Panasonic



Create an immersive educational experience that empowers students



Panasonic 4K projection solutions give AV/IT professionals the power to capture, shape and deliver impactful experiences that connect students on a deeper level and help today's institutions succeed in delivering top quality education.

Unlike traditional projectors, Panasonic's Quad Pixel Drive technology dynamically shifts pixels both vertically and horizontally. This innovative two-axis approach effectively quadruples the pixel density of the projected image, resulting in a resolution that goes beyond conventional 4K by enhancing detail and reducing pixelation.

Learn more at avispl.com/panasonic



PHILIPS



Philips Signage 3650
EcoDesign



Philips Tableaux

Open²

displays using less energy

Discover the Philips Signage 3650 EcoDesign and Philips Tableaux
Environmentally conscious displays without compromise

Philips Signage 3650 EcoDesign series

- 50% lower power consumption compared to other equivalent signage display with the same screen brightness
- Achieved through backlight LED with higher power efficiency
- Achieved through completely redesigning the optical stack to have as little as possible loss of light
- First signage display to reach EU energy rating C
- First signage display to reach EPEAT climate + gold certification
- Modular design approach to facilitate repairability
- Consumes 70% less power than a conventional digital signage display and we're the only manufacturer with an epeat silver rating.



Experience the difference for
yourself at avispl.com/philips

Philips Tableaux

- Zero power to display the image
- Only very little power to change the image
- Lower LCA / PCF

Sustainability efforts

- 45% ink reduction on the box / use soy-based ink
- New palletization methods – resulting in a 184 ton take to Wheel CO₂ reduction
- G gold level with ecovadis
- Recycled bezels
- Use recycled corrugated for packaging. Start to eliminate plastic and Styrofoam from our various display lines and are reducing the size of the outer box so the carbon footprint per box is reduced.

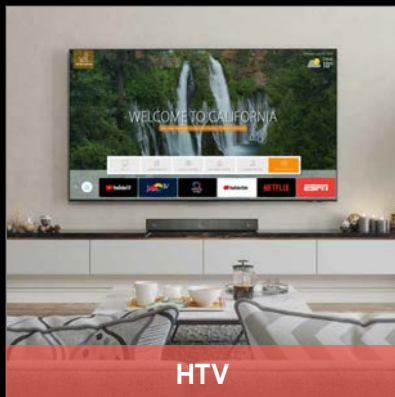
Open² Display without limits

SAMSUNG

SEA Display Division Portfolio

Your business opens up with Samsung Display

Maximize your business performance with Samsung Display technology, from LED Walls, to LCD-Signage, desktop monitors, Pro & Hospitality TV - and leading software and services solutions to manage and optimize your integrated solutions.



HTV



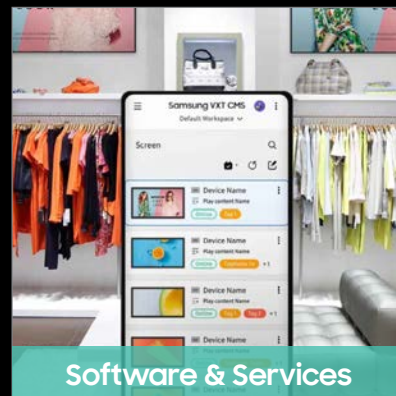
LCD-S



LED



B2B Monitor



Software & Services

Experience the possibilities today.



TeamConnect Bar Solutions

**Best in class audio.
Easy to use.
Works everywhere.**

With clean and crisp audio, TeamConnect Bar Solutions offer a truly inclusive meeting experience whether in the room or remotely. Easy to use plug and play devices that work in every room set up and allow for changing configurations. Order your TeamConnect Bar now to make sure you experience the most feature-rich all-in-one conferencing devices in their class.

avispl.com/sennheiser



**SHARP**

Simply Smarter Spaces

Sharp offers a complete array of projection and display products to meet every business need, including desktop, large format, video wall, dvLED, laser projection and interactive collaboration products. Understanding that every market and environment has unique requirements, Sharp prides itself on being your partner, delivering customized solutions to match your needs. Our best-in-class warranties and product reliability along with our industry expertise, is paramount to our commitment to bring you the ultimate immersive visual experience.

Learn more at:

<https://avispl.com/sharp/>

SONY

Creating Connected Experiences



There's no better way to connect with colleagues, students or visitors than sharing big, beautiful images with crisp details and vivid colors. Our Professional Display Solutions can transform your AV ecosystem with high-quality image capture and display technologies that not only captivate viewers, but also facilitate simple integration, flexible compatibility, and surprisingly low operating costs. Plus, they're backed by industry-leading warranty programs with Advanced Replacement and optional White Glove Service.

Find out how AVI-SPL and Sony can help you create connected experiences in your space.

Visit avispl.com/sony to learn more.



PROFESSIONAL DISPLAY SOLUTIONS

biamp.

Amplify What Matters



COMPLETE CONFERENCING PLUS UC COMPUTE

Whether it's for boardrooms, huddle spaces, or large conference rooms, the installer-friendly, complete conferencing bundles from Biamp feature one-touch setup that automatically customizes hundreds of settings for each unique space, ensuring faster deployment and elevating end-user satisfaction. You get everything required—from one partner—for extraordinary collaboration in any space, anywhere.

biamp.com

CHRISTIE®

POWERFUL EXPERIENCES. PERSONALIZED FOR THE FUTURE.

Ready to upgrade, enhance, and future-proof your space? Christie delivers smart, scalable AV solutions backed by expert support and lasting protection. From reimagining live events to optimizing performance environments, we work with you to design future-ready systems tailored to your vision.

Find out how we can help bring your ideas to life.



Corporate
solutions

Education
solutions

Immersive
solutions

Christie
Immersive Room
ISE 2025



Learn more

avispl.com/christie

Smarter focus, better meetings. Huddly L1 now with Speaker Mode.

With new Speaker Mode, the Huddly L1 automatically frames the active speaker—keeping your team focused, engaged, and in the flow. When the conversation shifts, the camera seamlessly adapts in real time. No manual controls, no distractions—just smooth, AI-driven video.

To learn more, visit avispl.com/huddly



Our portfolio



Huddly Crew
for medium, large
and flexible spaces



Huddly L1
for medium and
large spaces



Huddly S1
for small and
medium spaces



Huddly IQ
for small and
medium spaces



Huddly Canvas
for whiteboards
in any space

Lenovo
ThinkSmart



Lenovo ThinkSmart Core Gen 2

Smart collaboration just got smarter.

Amplify your Microsoft Teams Rooms meetings with Lenovo ThinkSmart Core Gen 2, the first AI-optimized compute device purpose-built for video conferencing room systems. Create innovative meeting spaces with Microsoft Copilot and Microsoft Teams Rooms to enhance meeting experiences by providing real-time speaker recognition and attribution, intelligent meeting recaps, and summarized action items.



INTENTIONAL DESIGN

The versatile built-in cable management system locks wires in place or detaches completely for a sleeker, more compact setup, and an integrated EDID management facilitates improved connectivity with room displays. ThinkSmart Core Gen 2 is tested to run 24/7/365 in a wide temperature range (5°C to 40°C), withstanding a crowded server room, and boasts a quiet chassis fan to go unnoticed behind a conference room display.



INCLUSIVE PRODUCTIVITY

Certified for Microsoft Teams Rooms on Windows, the ThinkSmart Core Gen 2 unlocks the power of Microsoft Copilot to improve your team's collaboration, engagement, and productivity. Enable AI-powered features like IntelliFrame and speaker recognition to ensure a first-class meeting experience for every participant. **THINKSMART CORE GEN 2** (i5 16gb, i7 32gb)

- Designed specifically for meeting rooms
- Built to withstand mission-critical operations
- Longer lifecycle and 27/7/365 uptime
- Detachable cable management system



INHERENT FLEXIBILITY

Customize rooms with Microsoft Teams- certified peripherals and ThinkSmart Core Gen 2, powered by Windows 11 IoT. Or choose the ThinkSmart Core Gen 2 Full Room Kit, which adds the AI-enhanced ThinkSmart Bar 180 for a premium Teams Rooms experience. For a true UC flex options, toggle to BYOD mode and run your meeting from a laptop. With either option, choose between the Lenovo IP Controller and ThinkSmart Controller for optimal configurations.



INTELLIGENT POWER

Powered by the Intel® Core™ Ultra processor and Intel vPro® platform, the ThinkSmart Core Gen 2 efficiently manages heavy AI workloads with up to 40% lower power consumption.² The unique NPU architecture built on Windows 11 IoT accelerates compute tasks and data transfer, optimizing AI performance and making operations more efficient, reliable, and secure.

PROFESSIONAL SERVICES & SUPPORT

- Preloaded with ThinkSmart Manager software with Intel vPro® platform for remote manageability.
- Lenovo ThinkShield offering adds an extra layer of security through its OS-to-cloud solutions.
- Includes Lenovo 3-year warranty with Premier Support and one year ThinkSmart Manager Premium license.
- Includes Lenovo Smart Collaboration Professional Services Deploy and Maintain to ensure fast, efficient rollout.

Learn more at
<https://avispl.com/lenovo/>

Smarter
technology
for all

©2025 Lenovo. All rights reserved. These products are available while supplies last. For any questions concerning price, please contact your Lenovo Account Executive. Lenovo is not responsible for photographic or typographic errors. Available with Intel® Core™ Ultra 5 processor or Intel® Core™ Ultra 7 processor. As measured by the power consumed by Intel Core Ultra 7 165H vs. prior gen. See www.intel.com/PerformanceIndex for details. Results may vary.

Lenovo



Personalized. Future-Ready. The AV Ecosystem for Business.

Seamless collaboration starts with the right technology. At Newline Interactive, we deliver Personalized Future-Ready Solutions through an integrated AV ecosystem designed to enhance communication, boost productivity, and streamline operations.

From interactive displays and digital signage to AI-powered collaboration tools, our ecosystem works together effortlessly—ensuring your teams stay connected and engaged, whether in the boardroom, the huddle space, or across the globe. With intuitive technology and customizable solutions, Newline empowers your business to work smarter, faster, and more efficiently.

Innovate. Collaborate. Succeed.

Future-proof your workplace with the power of a complete AV ecosystem.



Scan to learn more
or visit avispl.com/newline

newline



SMART[®] AVI  SPL

The interactive solution chosen by colleges worldwide

SMART creates advanced solutions to assist campuses in today's ever-changing world. Explore our latest products designed to make higher education more accessible, efficient, and productive.

SMART Board[®] Mini interactive podium



The SMART Board[®] Mini interactive podium is the canvas that educators can use for interactive presentations while facing what's important: **their audience.**

Leave your mark

Breathe life into static presentations and bring ideas to life with subscription-free SMART Ink[®] annotation software that allows writing into PDFs and Microsoft Office files, and over applications, browsers and connected video sources.

Bring interactivity anywhere

With a single cable connection, touch and digital ink extend to connected secondary screens or projectors, mirroring content to any external display via HDMI or USB-C output.

Versatile design

Use it as a free-standing display on a table or desk, mount it on a monitor arm, or embed it into a lectern for a variety of workspace setups.

Flexible computing options

The only interactive podium with an integrated OPS PC module slot, supporting Windows and Google-certified appliances. It also features one-cable Bring Your Own Device (BYOD) connectivity for added flexibility.

Flexible Solutions

Campus Entrances



Ensure that students, their families, and faculty are consistently informed and updated about upcoming events, closures, and other important information throughout the year.

Libraries



Create a valuable repository of instant-access knowledge for the school community. Simple walk-up-and-use tools increase student foot traffic and facilitate study groups.

Classrooms



Empower educators and students with tools that allow them to instantly access and interact with lesson content with ease. Users can ink on a wide variety of file types, and instructors can annotate without freezing the screen for a more dynamic lesson environment.

Lecture Halls



Communicate ideas more effectively by augmenting content with touch, gestures and digital ink.

Proud
partners

Queen's
UNIVERSITY

UNIVERSITY
OF
CALIFORNIA

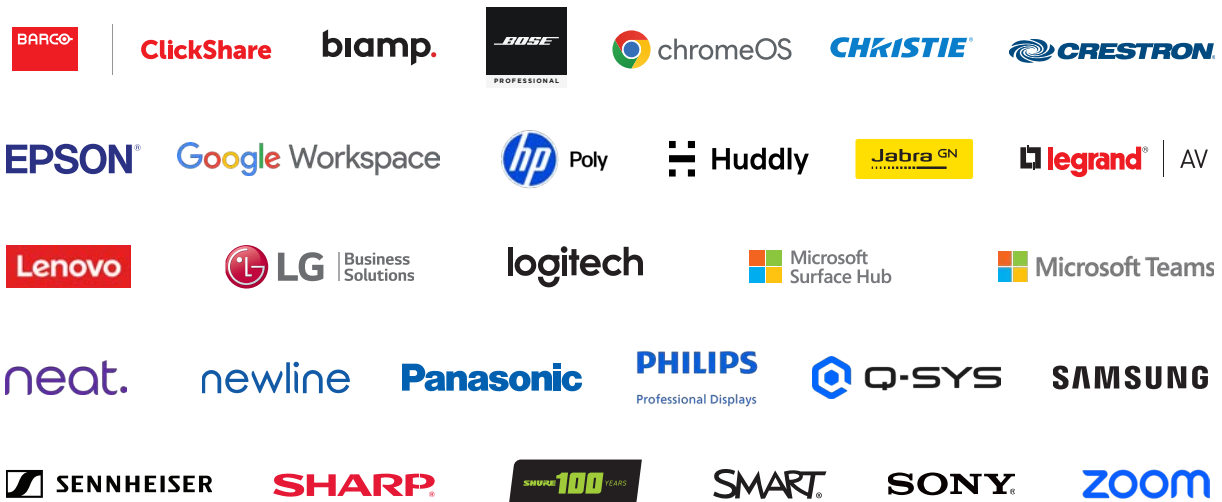
THE UNIVERSITY OF
MELBOURNE

Ask your questions
and talk with an expert



PARTIAL MANUFACTURER LIST

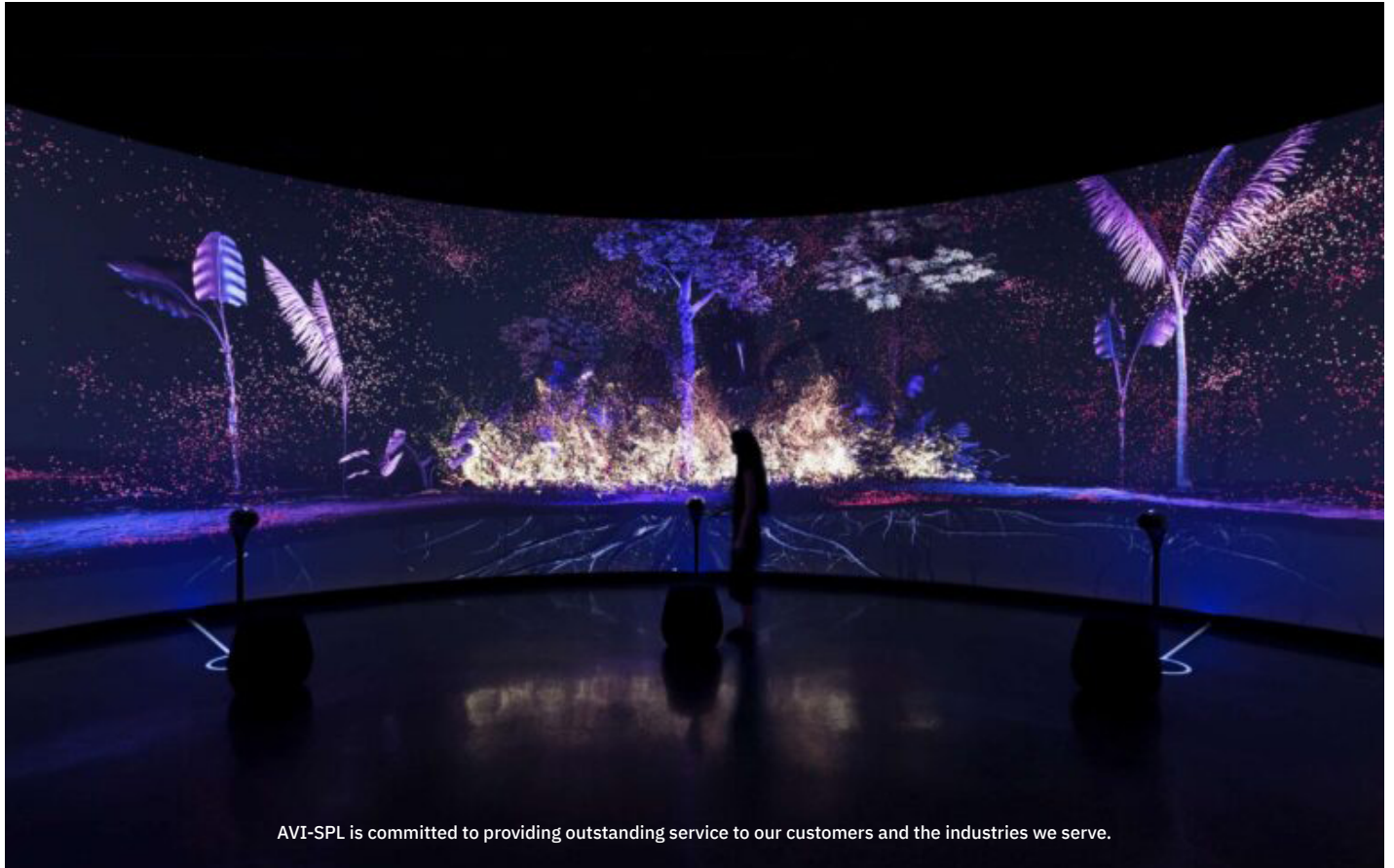
A close relationship with the top manufacturers of collaboration technology is key to our success—and the success of our clients. Through these partnerships, AVI-SPL is able to customize quality solutions to our clients' needs.



22Miles	BSS	Korbyt	RingCentral
Absen	C2G (Cables to Go)	Liberty AV	Salamander Designs
AKG	Canon	Luxul	Sound Control Technologies
AMX	Chief	Middle Atlantic	SoundCraft
Appspace	Comprehensive Connectivity	Mvi	SurgeX
Atlas Sound	Crown	NanoLumens	Uniguest
AudioCodes	Da-Lite	NETGEAR	Vaddio
Audio-Technica	dbx	Peerless-AV	Windy City Wire
AVAYA	Draper	Pexip	Wiremold
Avocor	Extron	Planar	
Belden	Harman	Primeview	
BrightSign	JBL	RGB Spectrum	



6301 BENJAMIN ROAD, SUITE 101
TAMPA, FL 33634



AVI-SPL is committed to providing outstanding service to our customers and the industries we serve.